

Runtime Governance: User Guide

1. Overview	1
2. Installation	3
2.1. Setup the target environment	3
2.1.1. JBoss EAP	3
2.1.2. Fuse	3
2.2. Install RTGov	3
2.3. Post-installation steps	4
2.3.1. JBoss EAP	4
2.3.2. Fuse	4
2.4. Configuration	5
2.4.1. Database	7
2.5. Test the installation using the samples	9
2.5.1. JBoss EAP	9
2.5.2. Fuse	10
2.6. JBoss EAP Specific Information	12
2.6.1. SQL Database	12
2.6.2. Caching	15
3. Visualising the Runtime Governance Information	17
3.1. Accessing the Runtime Governance UI	17
3.2. Services	18
3.3. Situations	21
3.3.1. Situation Lifecycle	28
3.4. Analytics	28
3.4.1. Dashboard	28
3.4.2. Changing the Time Frame and Refresh Cycle	32
3.4.3. Filtering by selection	33
3.4.4. Segmenting information by query	36
3.4.5. Adhoc queries	38
3.4.6. Customizing and sharing the Dashboard	39
4. Reporting Activity Information	41
4.1. Integrated Activity Collector	41
4.1.1. Supported Environments	41
4.1.2. Information Processor	41
4.1.3. Activity Validation	52
4.2. Reporting and Querying Activity Events via REST	57
4.2.1. Reporting Activity Information	57
4.2.2. Querying Activity Events using an Expression	58
4.2.3. Retrieving an Activity Unit	59
4.2.4. Retrieve Activity Events associated with a Context Value	59
5. Analyzing Events	61
5.1. Configuring an Event Processor Network	61
5.1.1. Defining the Network	61
5.1.2. Registering the Network	66
5.1.3. Supporting Multiple Versions	70

5.2. Event Processors	70
5.2.1. Drools Event Processor	71
5.2.2. JPA Event Processor	72
5.2.3. Mail Event Processor	72
5.2.4. MVEL Event Processor	73
5.2.5. Supporting Services	74
5.3. Predicates	74
5.3.1. MVEL Predicate	75
6. Accessing Derived Information	77
6.1. Configuring Active Collections	77
6.1.1. Defining the Source	77
6.1.2. Registering the Source	84
6.2. Presenting Results from an Event Processor Network	88
6.3. Publishing Active Collection Contents as JMX Notifications	90
6.4. Querying Active Collections via REST	92
6.5. Pre-Defined Active Collections	93
6.5.1. ServiceResponseTimes	93
6.5.2. Situations	93
6.5.3. ServiceDefinitions	94
6.5.4. Principals	96
7. Available Services	97
7.1. Call Trace	97
7.2. Report Server	97
7.2.1. Creating and deploying a report definition	98
7.2.2. Generating an instance of the report	100
7.2.3. Providing a custom Business Calendar	101
7.3. Service Dependency	101
7.3.1. How to customize the severity levels	101
7.4. Situation Manager	102
7.4.1. Ignoring situations related to a subject	102
7.4.2. Observing situations related to a subject	103
8. Managing The Infrastructure	105
8.1. Managing the Activity Collector	105
8.1.1. Activity Collector	105
8.1.2. Activity Logger	105
8.2. Managing the Event Processor Networks	106
8.2.1. Event Processor Network Manager	106
8.2.2. Event Processor Networks	107
8.3. Managing the Active Collections	108
8.3.1. Active Collection Manager	108
8.3.2. Active Collections	109

Chapter 1. Overview

This section provides an overview of the Runtime Governance architecture.

The architecture is separated into four distinct areas, with components that bridge between these areas:

- Activity Collector - this component is optional, and can be embedded within an executing environment to manage the collection of information
- Activity Server - this component provides a store and query API for activity information. If not using the Activity Collector, then activity information can be reported directly to the server via a suitable binding (e.g. REST).
- Event Processor Network - this component can be used to analyse the activity information. Each network can be configured with a set of event processing nodes, to filter, transform and analyse the events, to produce relevant rules.
- Active Collection - this component is responsible for maintaining an active representation of information being collected. UI components can then access this information via REST services to present the information to users (e.g. via gadgets)

This document will explain how a user can configure these components to work together to build a Runtime Governance solution to realtime monitoring of executing business transactions.

Chapter 2. Installation

This section will describe how to install Overlord Runtime Governance in different environments.

2.1. Setup the target environment

This section provides information about how to setup the target environments in which rtgov can be installed.

2.1.1. JBoss EAP

- Download the [JBoss EAP](http://www.jboss.org/jbossas/downloads/) [http://www.jboss.org/jbossas/downloads/] distribution (version 6.1 and 6.3 are currently supported), and unpack it in a suitable location.
- If using rtgov with switchyard, then download [SwitchYard](http://www.jboss.org/switchyard/downloads/) [http://www.jboss.org/switchyard/downloads/] (version 2.0.0.Final or higher) and install it into the JBoss EAP environment. We recommend using the switchyard installer, which can be unpacked in a temporary location, and run *ant* in the root folder to be prompted for the location of the JBoss EAP environment.



Note

If switchyard is not installed, then you won't be able to use the quickstarts, which are based around providing runtime governance for a switchyard application.

2.1.2. Fuse

- Download the [Fuse](http://www.jboss.org/products/fuse/download/) [http://www.jboss.org/products/fuse/download/] distribution (version 6.1), and unpack it in a suitable location.

2.2. Install RTGov

This section describes how to install Overlord Runtime Governance (RTGov).

- Download the latest release of RTGov from the [Overlord website](http://www.jboss.org/overlord/) [http://www.jboss.org/overlord/], then unpack the distribution into a suitable location.
- Download [Apache Ant](http://ant.apache.org/bindownload.cgi) [http://ant.apache.org/bindownload.cgi] and follow the installation instructions.
- The final step is to perform the installation of Overlord Runtime Governance using ant. To do the installation, use the following command from the root folder of the installation:

```
ant [ -Dappserver.id=<target> ] [ -Dpath=<root-folder> ] [ -Dtype=<installation-type> ]
```

The *<target>* represents the target environment into which rtgov is being installed:

Value	Description
jboss-eap-6	This is the default value. Target environment is JBoss EAP 6.x
fuse-6.1	Target environment is JBoss Fuse 6.1

If the *<root-folder>* is not explicitly provided on the command line, then the user will be prompted for the information.

The *<installation-type>* value can be:

Value	Description
all	This will result in the full server configuration being installed into the server, including activity collector (for obtaining activities generated within that server), activity server (for receiving activity information whether from a remote client or internal activity collector), event processor network (to analyse the events), active collections (to maintain result information) and a collection of REST services to support remote access to the information. This is the default value.
client	This will result in only the activity collector functionality being installed, using a RESTful client to communicate with a remote Runtime Governance server.

To uninstall, simply perform the following command in the root folder of the installation:

```
ant uninstall [ -Dappserver.id=<target> ] [ -Dpath=<root-folder> ] [ -Dtype=<installation-type> ]
```

2.3. Post-installation steps

2.3.1. JBoss EAP

To start the server, go to the EAP `bin` folder and run:

```
./standalone.sh -c standalone-full.xml
```

2.3.2. Fuse

- Configure RTGov in the Fuse distribution

Add the JBoss public maven repository to the file `etc/org.ops4j.pax.url.mvn.cfg`, by appending the following URL to the `org.ops4j.pax.url.mvn.repositories` property:

```
https://repository.jboss.org/nexus/content/groups/public@id=jboss.public
```

- Start the fuse console, using the `bin/fuse` command, and then enter the following commands:

```
features:addurl mvn:org.overlord.rtgov/overlord-rtgov-features-fuse6/  
<version>/xml/features
```



Note

`<version>` in the first command should be replaced by the RTGov version that you wish to use, e.g. `2.0.0.Final`.

If wanting to install the *all* profile (representing the RTGov server and co-located activity collector), then run:

```
features:install rtgov-all
```

However, if just wanting to install the *client* profile (co-located activity collector), then run:

```
features:install rtgov-client
```

If using SwitchYard, then also run:

```
features:install rtgov-switchyard
```

This registers the event listener on SwitchYard, to capture activity and report it to RTGov.



Note

Currently you may need to restart fuse after installing rtgov with switchyard.

2.4. Configuration

The configuration properties for the Runtime Governance capability are common across all platforms. However their location varies:

Value	Description
jboss-eap-6	The properties are found in the <i>standalone*.xml</i> files in the <code><root>/</code>

Value	Description
	<i>standalone/configuration</i> folder, or <i>domain.xml</i> file in <i><root>/domain/configuration</i> folder. The properties are defined under a <i>configuration</i> element with an attribute "name= <i>overlord-rtgov</i> ".
fuse-6.1	The properties are found in the <i><root>/etc/overlord-rtgov.properties</i> file.

Although there will be some properties that are independent of the installation type, some will be specific and therefore are listed in separate sections below.

Common

The common properties available across all installation types are:

Property	Description
collectionEnabled	This property will determine whether activity information is collected when the server is initially started. This value can be changed at runtime using the ActivityCollector MBean (see the chapter on <i>Managing the Infrastructure</i>).
ActivityServerLogger.activityListQueueSize	This property defines the queue size for pending activity lists, that are awaiting being reported to the Activity Server.
ActivityServerLogger.durationBetweenFailureReports	To avoid logs being overlorded with failure reports, failures will only be reported once within the defined time interval (in milliseconds).
ActivityServerLogger.freeActivityListQueueSize	This property defines the queue size to manage free activity lists that can be reused.
ActivityServerLogger.maxThreads	This property is an integer that represents the maximum number of threads that should be used to report activity events to the server (whether remote or embedded).
BatchedActivityUnitLogger.maxTimeInterval	The maximum wait interval (in milliseconds) before sending any held activity units to the Activity Server.
BatchedActivityUnitLogger.maxUnitCount	The maximum number of activity units that should be held before sending as a batch to the Activity Server.

All Type

Property	Description
ActiveCollectionManager.houseKeepingInterval	Time interval (in milliseconds) between house keeping tasks being invoked.
ActivityStore.class	The class associated with the Activity Store implementation to be used.
Elasticsearch.server	URL to the Elasticsearch server (HTTP port).
infinispan.container	The infinispan container to use.
MVELSeverityAnalyzer.scriptLocation	Optional location of a MVEL script used to determine severity levels for nodes and links within the service overview diagram.
SituationStore.class	The class associated with the Situation Store implementation to be used.



Note

Activity and Situation Store implementation specific properties will be discussed in the database section below.

Client Type

This installation type is used to configure an execution environment that will be sending its activity information to a remote Runtime Governance server using REST. The relevant properties are:

Property	Description
RESTActivityServer.serverURL	This is the URL of the activity server collecting the activity events.
RESTActivityServer.serverUsername	The username used to access the REST service.
RESTActivityServer.serverPassword	The password used to access the REST service.

2.4.1. Database

This section described the configuration of the supported database options.

2.4.1.1. Elasticsearch



Note

This is the default "out of the box" configuration.

To use Elasticsearch as the Activity and Situation Store implementation, the following property values need to be defined:

```
ActivityStore.class=org.overlord.rtgov.activity.store.elasticsearch.ElasticsearchActivityStore
SituationStore.class=org.overlord.rtgov.analytics.situation.store.elasticsearch.ElasticsearchSituationStore
```

with the additional support properties:

Property	Description
Elasticsearch.hosts	List of <host>:<port> values representing nodes in the Elasticsearch cluster, the port representing the TCP transport connection. Default value is: localhost:9300
Elasticsearch.schedule	When using batched mode, the interval (in milliseconds) between updates being sent to the Elasticsearch server.

2.4.1.2. SQL

To use a SQL database as the Activity and Situation Store implementation, the following property values need to be defined:

Property	Value
ActivityStore.class	org.overlord.rtgov.activity.store.jpa.JPAActivityStore
SituationStore.class	org.overlord.rtgov.analytics.situation.store.jpa.JPASituationStore

with the additional support properties:

Property	Description
JPAActivityStore.jndi.datasource	The JNDI name used to retrieve the datasource.
JPAEventProcessor.jndi.datasource	The JNDI name used to retrieve the datasource.
JPASituationStore.jndi.datasource	The JNDI name used to retrieve the datasource.
JpaStore.jtaPlatform	The JTA platform Java implementation class.



Warning

As of RTGov 2.x, Elasticsearch is the main supported implementation of the Activity and Situation Store.

2.5. Test the installation using the samples

When RTGov has been installed, try out the samples to get an understanding of its capabilities, and check that your environment has been correctly installed/configured.

2.5.1. JBoss EAP

To install the samples into JBoss EAP go to the `samples` folder in the distribution. You will need to install [Apache Maven](http://maven.apache.org/download.cgi) [http://maven.apache.org/download.cgi] to be able to use the examples.

The key examples are explained below. Each quickstart also has a readme providing the instructions for use.

2.5.1.1. Order Management

The `samples/ordermgmt` folder contains examples related to an Order Management system implemented using a SwitchYard application.

The `samples/ordermgmt/app` folder contains the switchyard application, with some additional interceptors to execute policies synchronously (see Activity Validators section for more information, and the Synchronous Policy quickstart more a specific example of its use).

The `samples/ordermgmt/epn` folder contains an Event Processor Network (see later section for details) that is used to convert switchyard application exceptions into "Situations", which is a form of alert used by the Runtime Governance platform.

The `samples/ordermgmt/ip` folder contains an Information Processor (see later section for details) that is used to extract additional information from message payloads, that will be useful when analysing the activity events.

2.5.1.2. Policy

The `samples/policy/sync` folder contains a policy that is invoked synchronously - it determines whether a user has invoked the service more than once every two seconds, and if so, blocks the service invocation.

The `samples/policy/async` folder contains a policy for asynchronously calculating the debt associated with a customer, and suspending their account if it goes above a defined level. The suspended status of the customer is checked when they next invoke the service, and the service invocation blocked if they have been suspended.

2.5.1.3. SLA

The `samples/sla/epn` folder contains a policy for determining whether a Service Level Agreement has been violated, and if so, reported as a *Situation*.

The `samples/sla/monitor` folder contains a webapp that directly integrates with the RTGov components.

2.5.2. Fuse

To try out the samples in Fuse, you will need to start up the Fuse console.

2.5.2.1. Order Management

To install an OSGi application to provide a simple order management capability, with an Event Processor Network to convert exceptions into *Situations*, run the following command from the fuse console:

```
features:install rtgov-samples-ordermgmt-epn
```

Send some requests to the order management service, at the URL <http://localhost:8181/cxf/orderservice/orders/submit>, with basic authentication username=admin, password=admin (as defined in the `etc/user.properties` file). For example, send the message:

```
{"orderId":"1","itemId":"BUTTER","quantity":100,"customer":"Fred"}
```

which should return the result:

```
{
  "total": 125,
  "accepted": true,
  "customer": "Fred",
  "orderId": "1",
  "status": "Order Accepted"
}
```

If you then send:

```
{"orderId":"6","itemId":"ERROR","quantity":100,"customer":"Fred"}
```

you will get the response:

```
Failed with an error
```

and a *Situation* will be created in the RTGov UI.

2.5.2.2. Detect Service Level Agreement (SLA) Violations

To install a policy that will check for SLA violations, run the following command from the fuse console:

```
features:install rtgov-samples-sla
```

Send some requests to the order management service, at the URL <http://localhost:8181/cxf/orderservice/orders/submit>, with basic authentication username=admin, password=admin (as defined in the `etc/user.properties` file). For example, send the message:

```
{ "orderId": "3", "itemId": "JAM", "quantity": 100, "customer": "Fred" }
```

which should return the result after a slight delay:

```
{
  "total": 240,
  "accepted": true,
  "customer": "Fred",
  "orderId": "3",
  "status": "Order Accepted"
}
```

The delay is caused by the request for itemId *JAM*, and results in the policy detecting a SLA violation which are reported as two *Situation* events that can be viewed in the RTGov UI.

2.5.2.3. Synchronous Policy Enforcement

To install a policy that will be evaluated immediately, to prevent a customer from invoking a service more than once within two seconds, run the following command from the fuse console:

```
features:install rtgov-samples-policy-sync
```

Send the following request twice in quick succession, to the order management service at the URL <http://localhost:8181/cxf/orderservice/orders/submit>, with basic authentication username=admin, password=admin (as defined in the `etc/user.properties` file):

```
{ "orderId": "1", "itemId": "BUTTER", "quantity": 100, "customer": "Fred" }
```

The first request will return the expected:

```
{
  "total": 125,
  "accepted": true,
  "customer": "Fred",
  "orderId": "1",
  "status": "Order Accepted"
}
```

However the second invocation (if performed within two seconds of the first) will return:

```
Customer 'Fred' cannot perform more than one request every 2 seconds
```

2.5.2.4. Asynchronous Policy Enforcement

To install a policy that will evaluate a customer's debt level, and suspend their account if it becomes too high, run the following command from the fuse console:

```
features:install rtgov-samples-policy-async
```

Send some requests to the order management service, at the URL <http://localhost:8181/cxf/orderservice/orders/submit>, with basic authentication username=admin, password=admin (as defined in the `etc/user.properties` file). For example, send the message:

```
{"orderId": "1", "itemId": "BUTTER", "quantity": 100, "customer": "Fred" }
```

When the credit limit has been reached, the customer will be suspended, resulting in a response "Customer *Fred* has been suspended".

If we then sent the following request, to clear some of customer Fred's debt:

```
{"amount": 400, "customer": "Fred" }
```

we will then be able to send further order requests.

2.6. JBoss EAP Specific Information

2.6.1. SQL Database

The database is defined by the datasource configuration located here: `$JBossAS_HOME/standalone/deployment/overlord-rtgov/rtgov-ds.xml` as part of the `server` installation type.

The default SQL database is the H2 file based database, and is created during the installation of the `all` type.



Note

The following sections discuss changes to the `standalone-full.xml` configuration file. If using a clustered environment, then these changes should be applied to the `standalone-full-ha.xml` instead.

MySQL

- Create the folder `$JBossAS/modules/mysql/main`.
- Put the MySQL driver jar in the `$JBossAS/modules/mysql/main` folder, e.g. `mysql-connector-java-5.1.12.jar`.
- Create a `module.xml` file, within the `$JBossAS/modules/mysql/main` folder, with the contents:


```
<module xmlns="urn:jboss:module:1.1" name="mysql">
  <resources>
    <resource-root path="mysql-connector-java-5.1.12.jar"/>
  </resources>
  <dependencies>
    <module name="javax.api"/>
    <module name="javax.transaction.api"/>
  </dependencies>
</module>
```

- Edit the `$JBossAS/standalone/configuration/standalone-full.xml` file to include the MySQL driver:

```
<subsystem xmlns="urn:jboss:domain:datasources:1.0">
  <datasources>
    .....
    <drivers>
      ...
      <driver name="mysql" module="mysql">
        <xa-datasource-class>com.mysql.jdbc.jdbc2.optional.MysqlXADataSource</xa-datasource-class>
      </driver>
    </drivers>
  </datasources>
</subsystem>
```

- Update the `rtgov datasource` file, `$JBossAS/standalone/deployments/overlord-rtgov/rtgov-ds.xml`, the contents should be:

```
<?xml version="1.0" encoding="UTF-8"?>
<datasources>
  <datasource jndi-name="java:jboss/datasource/OverlordRTGov" pool-
name="OverlordRTGov" enabled="true" use-java-context="true">
    <connection-url>jdbc:mysql://localhost:3306/rtgov</connection-url>
    <driver>mysql</driver>
    <security>
      <user-name>root</user-name>
      <password></password>
    </security>
  </datasource>
</datasources>
```

Postgres

- Create the `$JBossAS/modules/org/postgresql/main` folder.
- Put the postgresql driver jar in the `$JBossAS/modules/org/postgresql/main` folder, e.g. `postgresql-9.1-902.jdbc4.jar`.
- Create a `module.xml` file, within the `$JBossAS/modules/org/postgresql/main` folder, with the contents:

```
<module xmlns="urn:jboss:module:1.1" name="org.postgresql">
  <resources>
    <resource-root path="postgresql-9.1-902.jdbc4.jar"/>
  </resources>
  <dependencies>
    <module name="javax.api"/>
    <module name="javax.transaction.api"/>
  </dependencies>
</module>
```

- Edit the `$JBossAS/standalone/configuration/standalone-full.xml` file to include the PostgreSQL driver:

```
<subsystem xmlns="urn:jboss:domain:datasources:1.0">
  <datasources>
    ....
    <drivers>
      ...
      <driver name="postgresql" module="org.postgresql">
        <xa-datasource-class>org.postgresql.xa.PGXADatasource</xa-
datasource-class>
      </driver>
    </drivers>
  </datasources>
</subsystem>
```

- Update the `rtgov` datasource file, `$JBossAS/standalone/deployments/overlord-rtgov/rtgov-ds.xml`, the contents should be:

```
<?xml version="1.0" encoding="UTF-8"?>
<datasources>
  <datasource jndi-name="java:jboss/datasource/OverlordRTGov" pool-
name="OverlordRTGov" enabled="true" use-java-context="true">
    <connection-url>jdbc:postgresql://localhost:5432/rtgov</connection-url>
    <driver>postgresql</driver>
    <security>
      <user-name>....</user-name>
```

```
        <password>....</password>
    </security>
</datasource>
</datasources>
```

2.6.2. Caching

The EPN and Active Collection mechanisms both have the ability to make use of caching provided by Infinispan. When running the server in clustered mode (i.e. with `standalone-full-ha.xml`).

First step is to uncomment the *infinispan.container* property in the `overlord-rtgov.properties` file and set it to the JNDI name of the cache container (*java:jboss/infinispan/container/rtgov* in the example below). This property represents the default cache container to be used by EPN and Active Collection Source configurations that do not explicitly provide a container JNDI name.

The next step is to create the cache container configuration, and the specific caches, under the *infinispan* subsystem in the `standalone-full-ha.xml` file. As an example, the following cache entry for the "Principals" cache has been defined, for use with the Policy Enforcement examples:

```
    <cache-container name="rtgov" jndi-name="java:jboss/infinispan/
container/rtgov" start="EAGER">
        <transport lock-timeout="60000"/>
        <replicated-cache name="Principals" mode="SYNC">
            <locking isolation="REPEATABLE_READ"/>
            <transaction mode="FULL_XA" locking="PESSIMISTIC"/>
        </replicated-cache>
    </cache-container>
```


Chapter 3. Visualising the Runtime Governance Information

This section describes how to use the Runtime Governance User Interface (UI).

3.1. Accessing the Runtime Governance UI

To access the Runtime Governance UI, after the server has been started, use the url: `<host>/rtgov-ui`

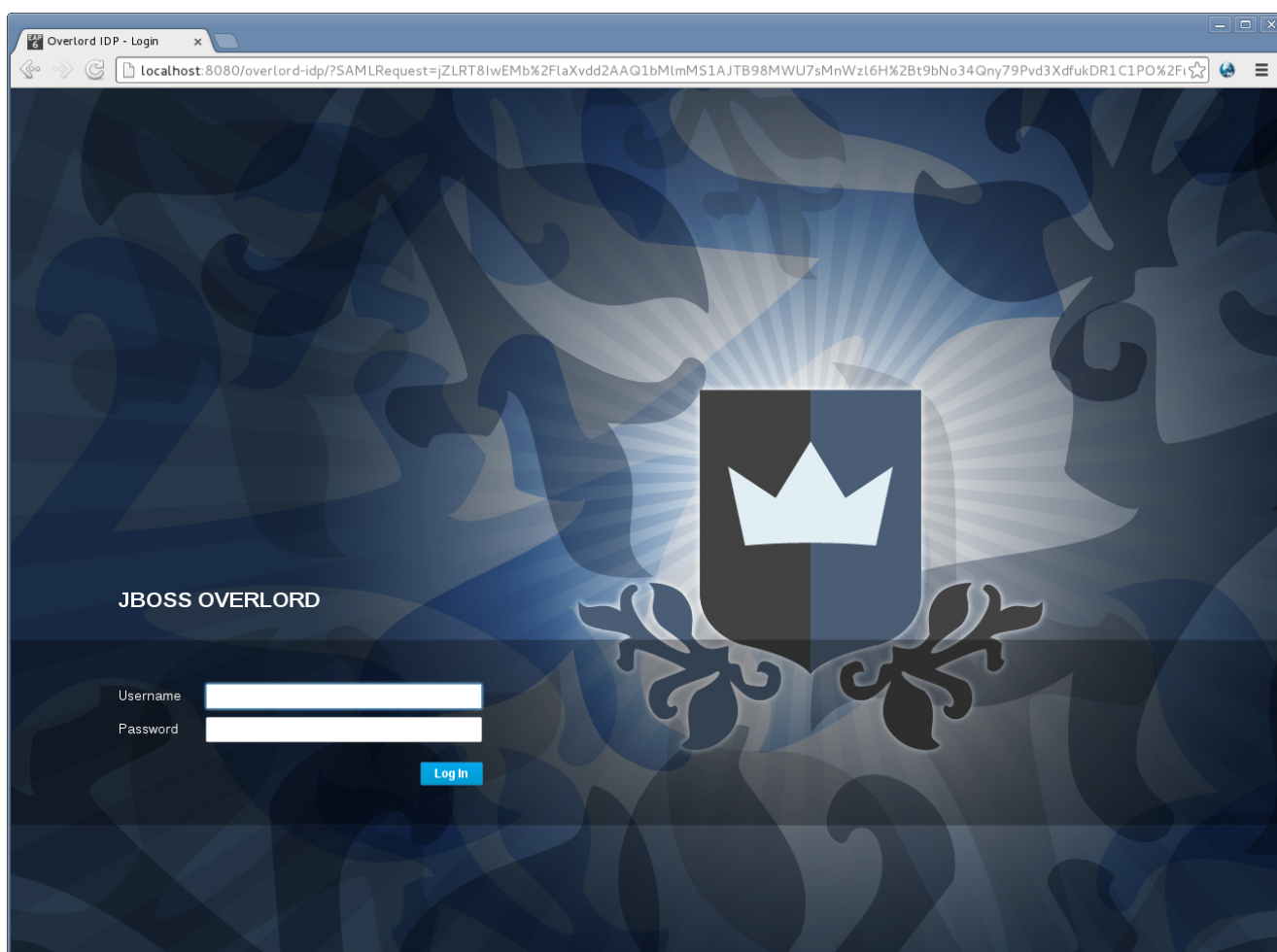


Figure 3.1.

Once displayed, it will request an username and password. When successfully logged in, you will be presented with the top level dashboard:

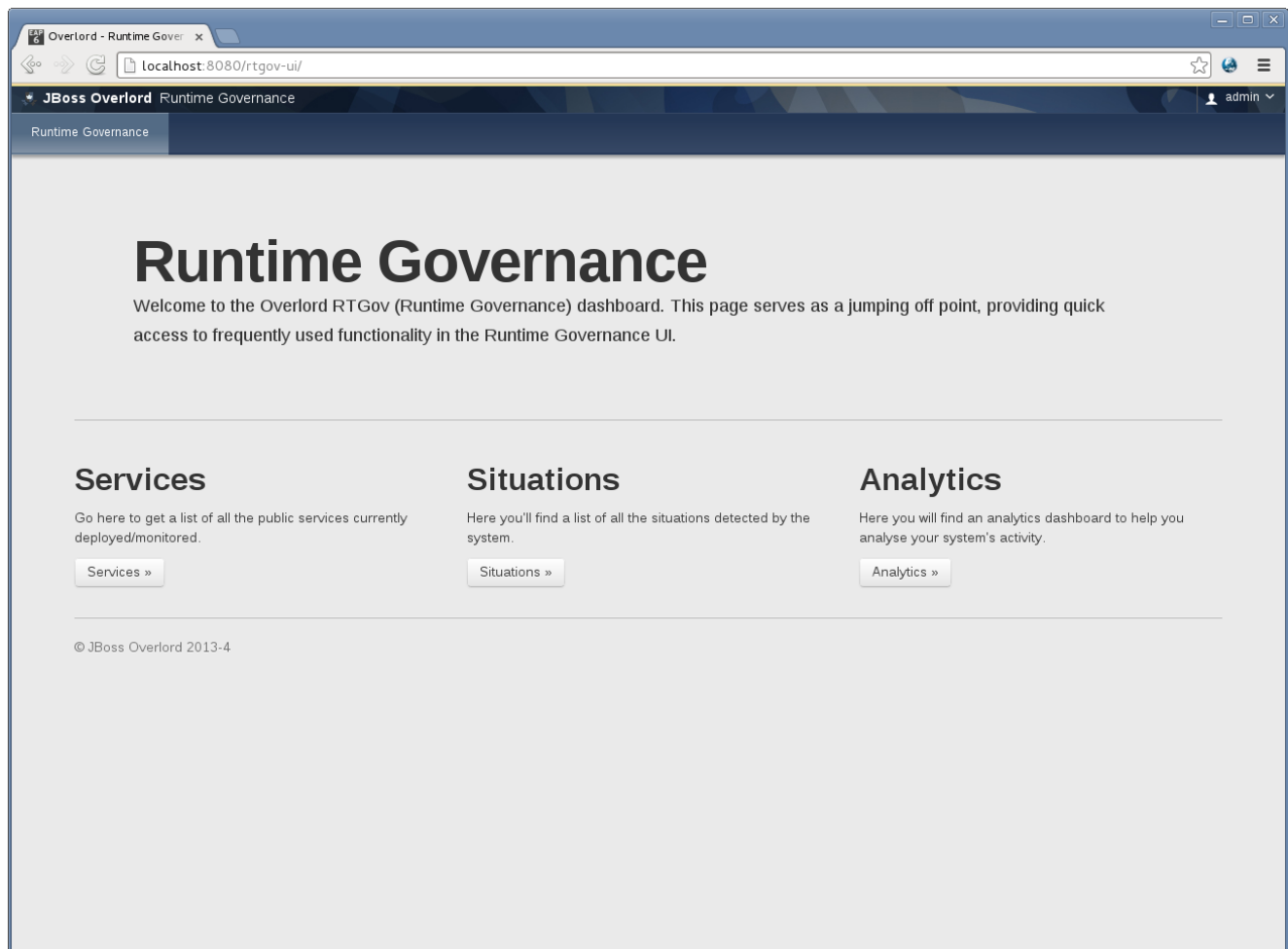
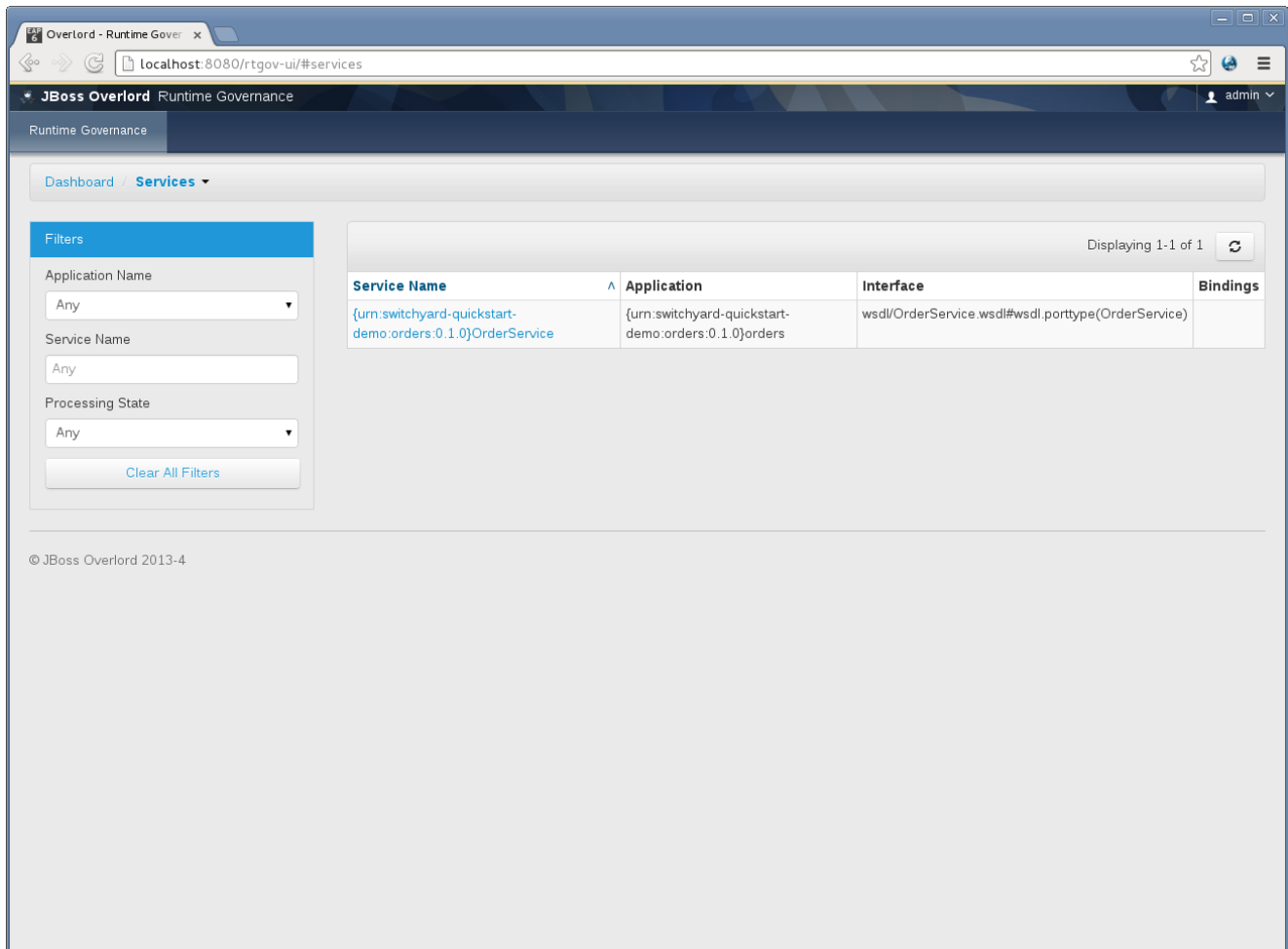


Figure 3.2.

The dashboard provides access to three types of information related to runtime governance. These will be discussed in more detail in the following sections.

3.2. Services

The *Services* page lists the services that have been deployed to a service container (e.g. switchyard) and are being monitored by RTGov.



The screenshot displays the JBoss Overlord Runtime Governance interface. The top navigation bar shows 'JBoss Overlord Runtime Governance' and a user profile 'admin'. The main content area is titled 'Services' and contains a table of service information. On the left, there is a 'Filters' sidebar with dropdown menus for 'Application Name', 'Service Name', and 'Processing State', all currently set to 'Any'. A 'Clear All Filters' button is located below these filters. The table has four columns: 'Service Name', 'Application', 'Interface', and 'Bindings'. It displays one service: '{urn:switchyard-quickstart-demo:orders:0.1.0}OrderService'. The 'Application' column shows '{urn:switchyard-quickstart-demo:orders:0.1.0}orders'. The 'Interface' column shows 'wsdl/OrderService.wsdl#wsdl:porttype(OrderService)'. The 'Bindings' column is empty. A 'Displaying 1-1 of 1' indicator is in the top right of the table area. The footer of the page shows '© JBoss Overlord 2013-4'.

Service Name	Application	Interface	Bindings
{urn:switchyard-quickstart-demo:orders:0.1.0}OrderService	{urn:switchyard-quickstart-demo:orders:0.1.0}orders	wsdl/OrderService.wsdl#wsdl:porttype(OrderService)	

Figure 3.3.

The list shows the service name, optional application in which it is contained, the external interface(s) it implements and finally the bindings through which it can be accessed.



Note

For switchyard services, this list will only contain the public (promoted) services, however activity information will be collected for internal component services as well.

When a service name is selected, it will navigate to the details page:

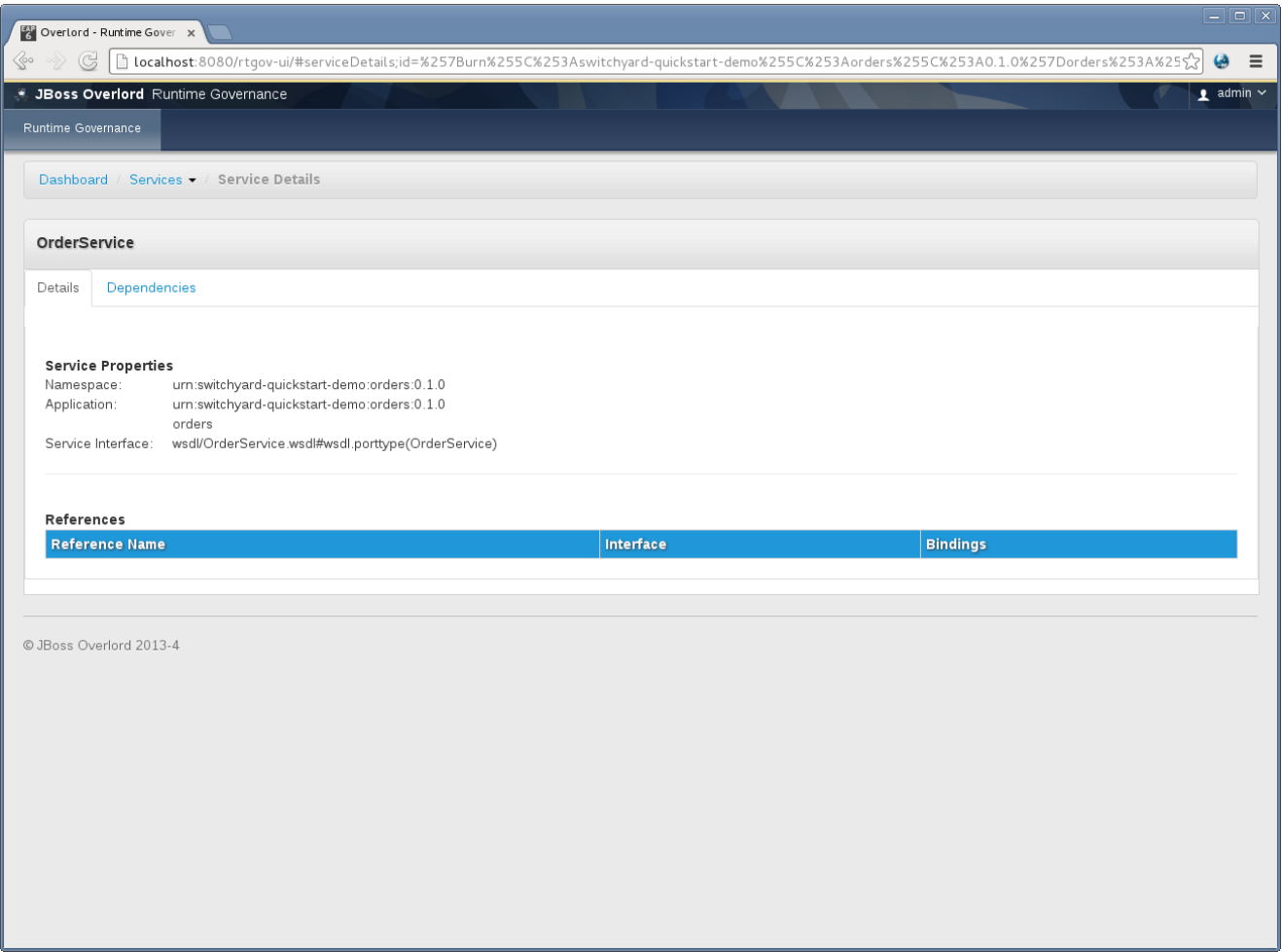


Figure 3.4.

This page shows high level information about the service, and where appropriate, any promoted references it has to other external services.

The *Dependencies* tab can be used to view dynamic dependency information about the service. This information is based on a short term rolling window, and will therefore only show the relationships associated with recent invocations:

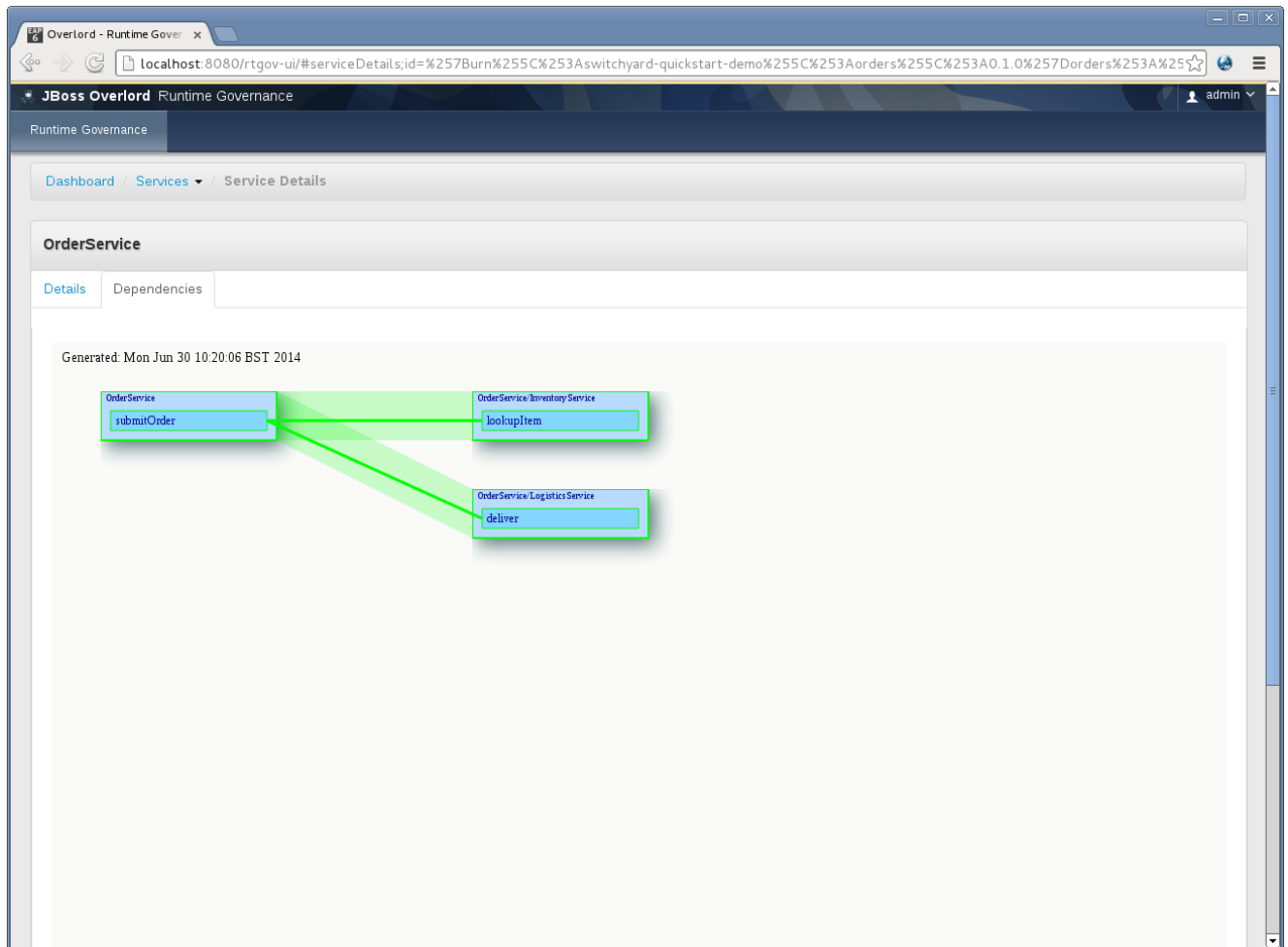


Figure 3.5.

3.3. Situations

This section shows the *Situations* that are reported when RTGov policies detect issues that need to be brought to the attention of users.

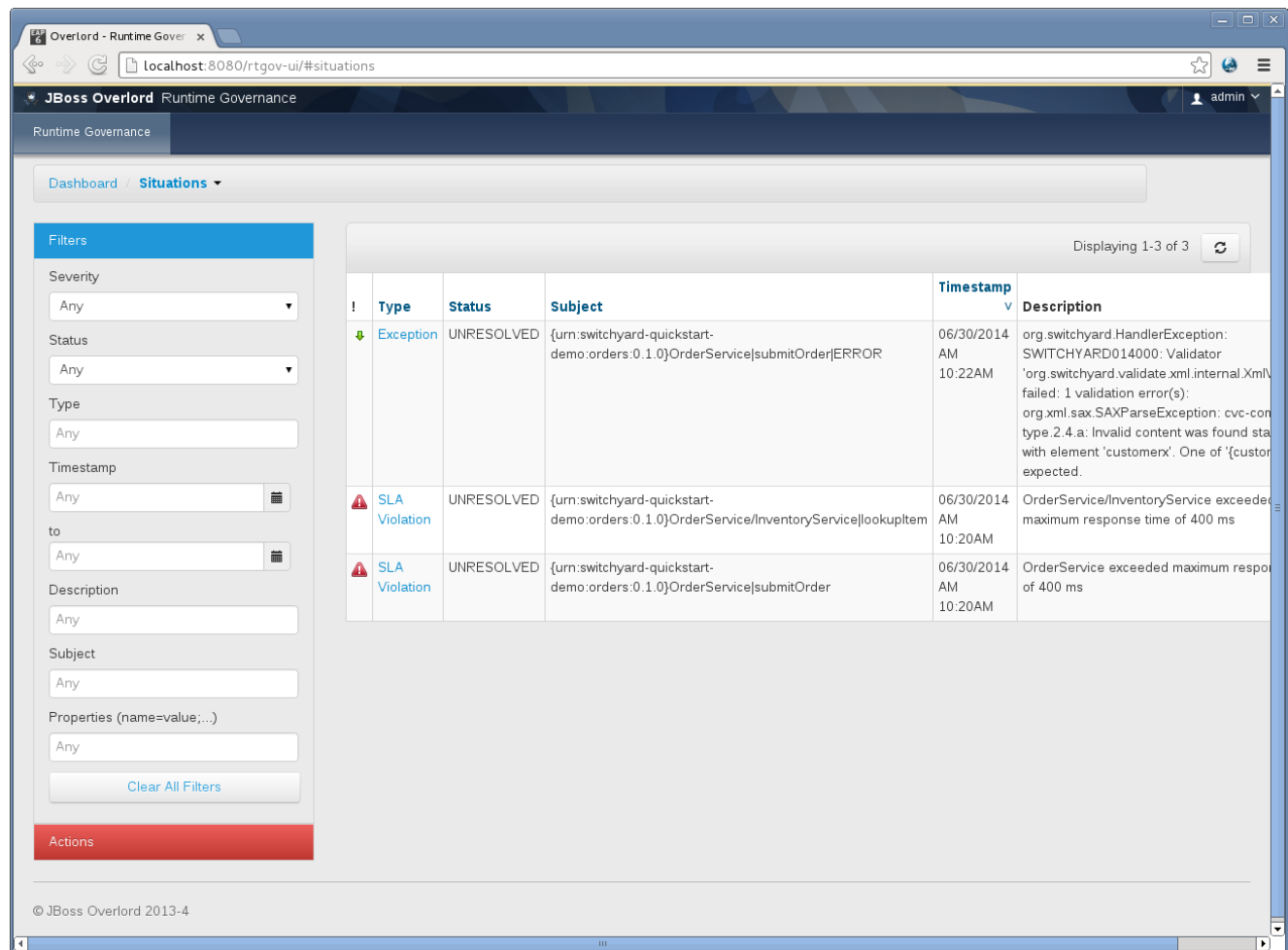


Figure 3.6.

The left hand panel provides a variety of options for filtering the list of situations.

The list contains the following columns:

- Severity - an icon to indicate how severe the situation is.
- Type - identifies the nature of the situation (e.g. SLA Violation, Exception, etc).
- Status - where the situation is in its lifecycle (see further down for description of the lifecycle).
- Subject - the subject of the situation, which will generally be a service type and operation, with optional fault name.
- Timestamp - when it occurred.
- Description - further details about the situation.
- Action - show properties for the situation.

At the bottom left is a collapsed region containing controls for performing *bulk actions*.

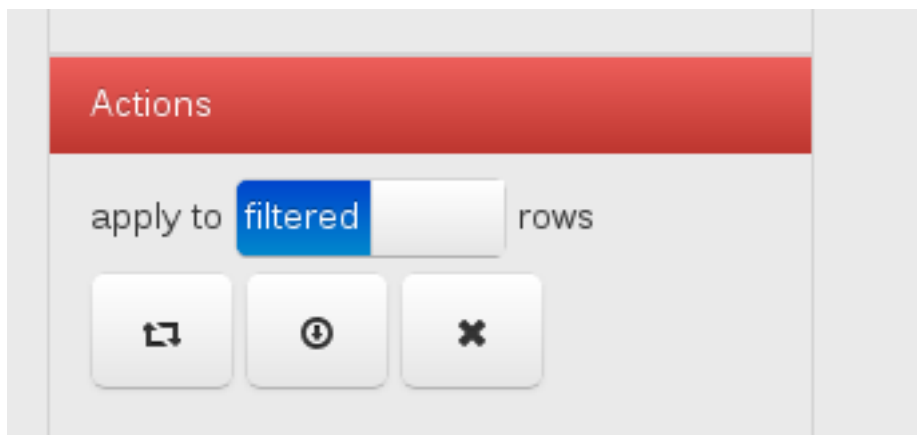


Figure 3.7.

These actions can operate either on the filtered situations (as shown here), or all situations. The actions themselves, from left to right, are *retry* (i.e. resubmit an associated message to the target service), *export* and *remove*.

When a new *Situation* occurs, if the user is already viewing the situations page, then a small notification will be displayed in the top right corner:

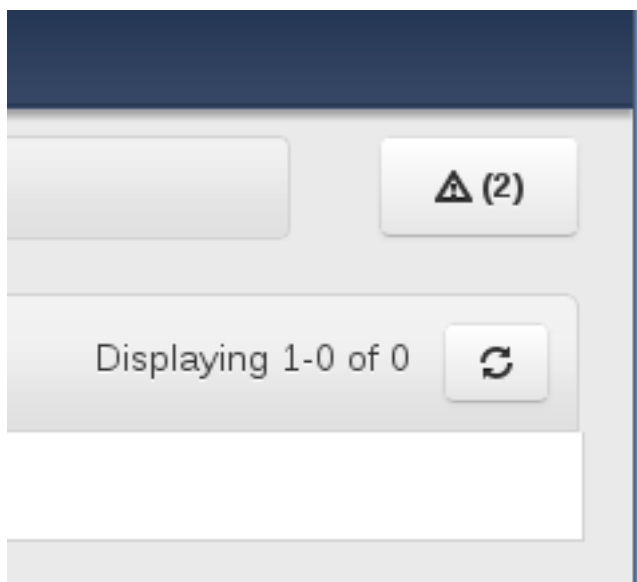


Figure 3.8.

If this notification is expanded, it will list some of the details for the new *Situations*:

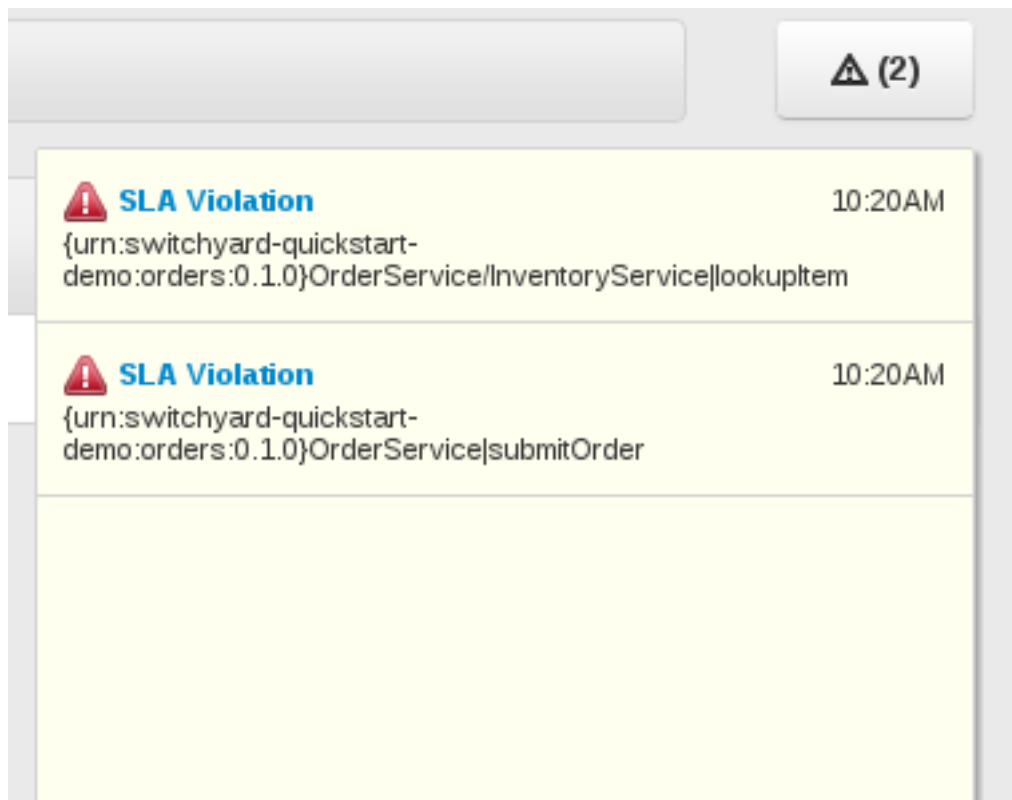


Figure 3.9.

The user can either select one of the entries to navigate to its details, or alternatively use the refresh button to update the list.

To view the details associated with a *Situation* in the list, select its type field, which will navigate to the details page:

The screenshot displays the JBoss Overlord Runtime Governance console. The browser address bar shows the URL: `localhost:8080/rtgov-ui/#situationDetails?id=285d29aa-e7ce-47b8-9faa-1e999d5ad7ca`. The page title is "JBoss Overlord Runtime Governance". The breadcrumb navigation shows "Dashboard / Situations / Situation Details".

The main content area is titled "SLA Violation" with a red warning icon. Below the title are three tabs: "Details", "Call Trace", and "Message". The "Details" tab is active.

Situation Details

Subject: {urn:switchyard-quickstart-demo:orders:0.1.0}OrderService|submitOrder
Status: UNRESOLVED
Timestamp: 06/30/2014 AM 10:20AM

Description

OrderService exceeded maximum response time of 400 ms

Properties

Name	Value
total	240.0
node	gbrown-redhat
host	gbrown-redhat
gateway	soap
item	JAM
contentType	{urn:switchyard-quickstart-demo:orders:1.0}submitOrder
customer	Fred

Context Data

Type	Value
Conversation	3

At the bottom of the "Details" tab is an "Assign" button.

© JBoss Overlord 2013-4

Figure 3.10.

This page shows the details of the situation, including properties and context data.

The *Call Trace* tab shows the call stack associated with the business transaction, if appropriate context information has been recorded with the situation.

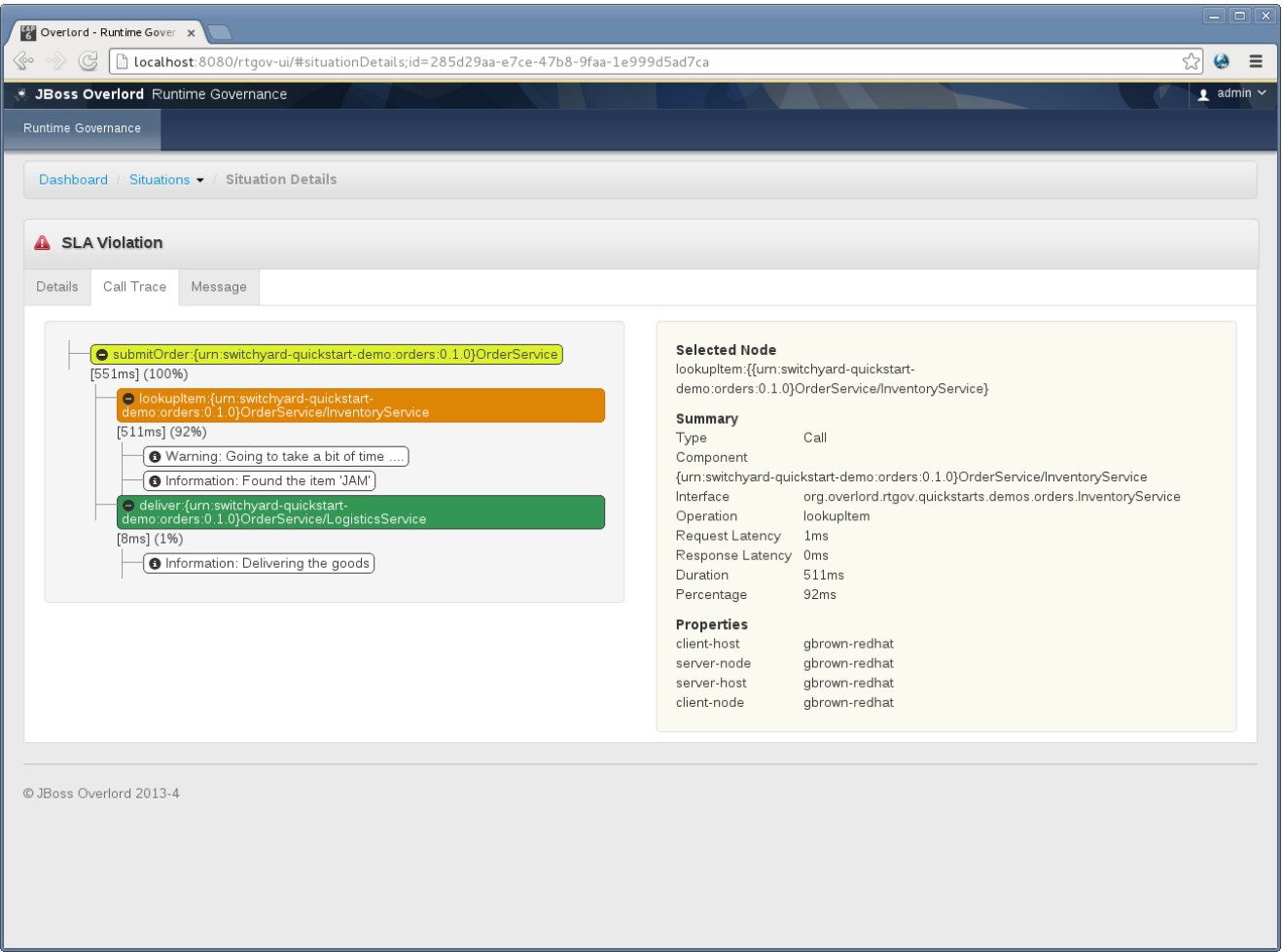
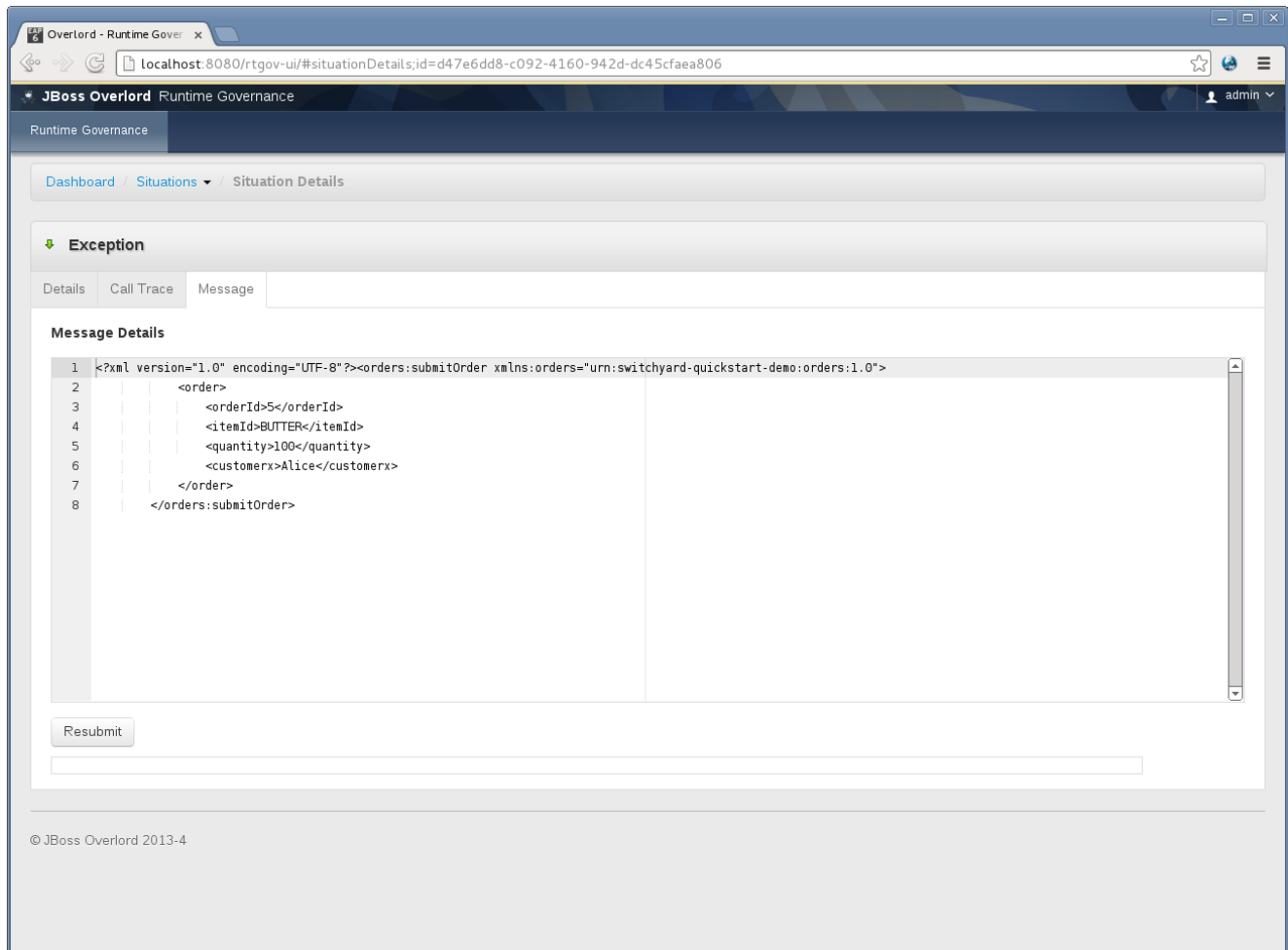


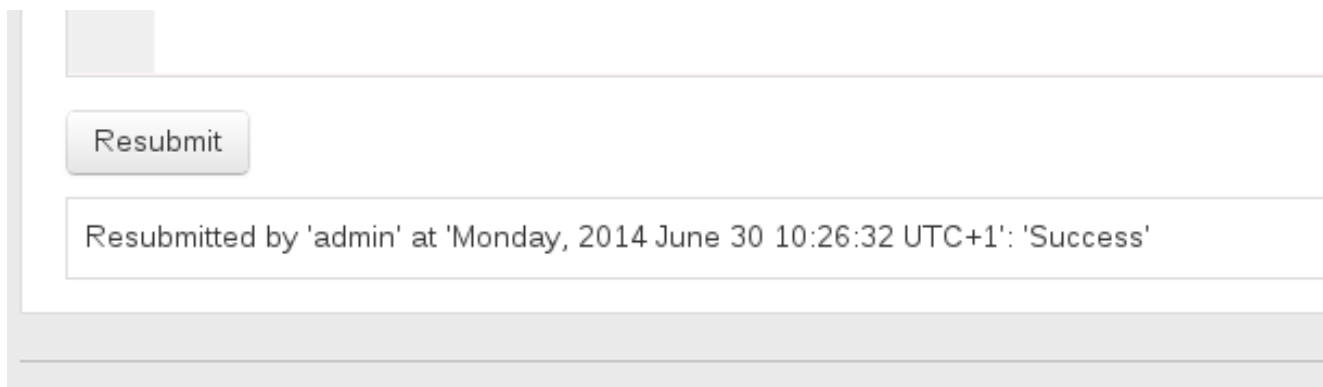
Figure 3.11.

Selecting a node in the call trace displays further details in the right hand panel.

The optional *Message* tab is displayed if the *Situation* has an associated business message.

**Figure 3.12.**

If the service and operation, associated with the situation, supports resubmission of the messages (i.e. if a SwitchYard service, then it would need to have an SCA binding and the operation would need to be one-way), then the user will be able to edit the message content and press the *Resubmit* button. This will result in resubmission information being displayed:

**Figure 3.13.**

3.3.1. Situation Lifecycle

The following diagram shows the lifecycle of a *Situation*. Transitions are controlled by appropriate buttons presented when viewing the situation details.

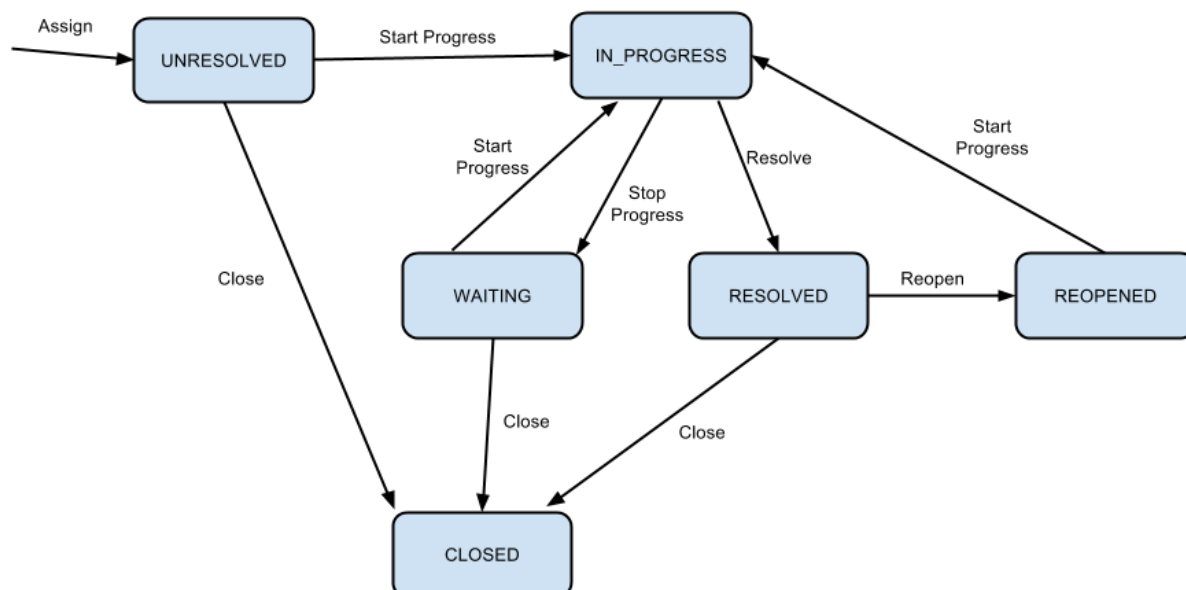


Figure 3.14.

3.4. Analytics

RTGov uses [Elasticsearch](http://www.elasticsearch.org/) [http://www.elasticsearch.org/] to store the activity information, and [Kibana](http://www.elasticsearch.org/overview/kibana/) [http://www.elasticsearch.org/overview/kibana/] to provide a dashboard for analysing that information.

3.4.1. Dashboard

The "out of the box" dashboard layout presents the following information:

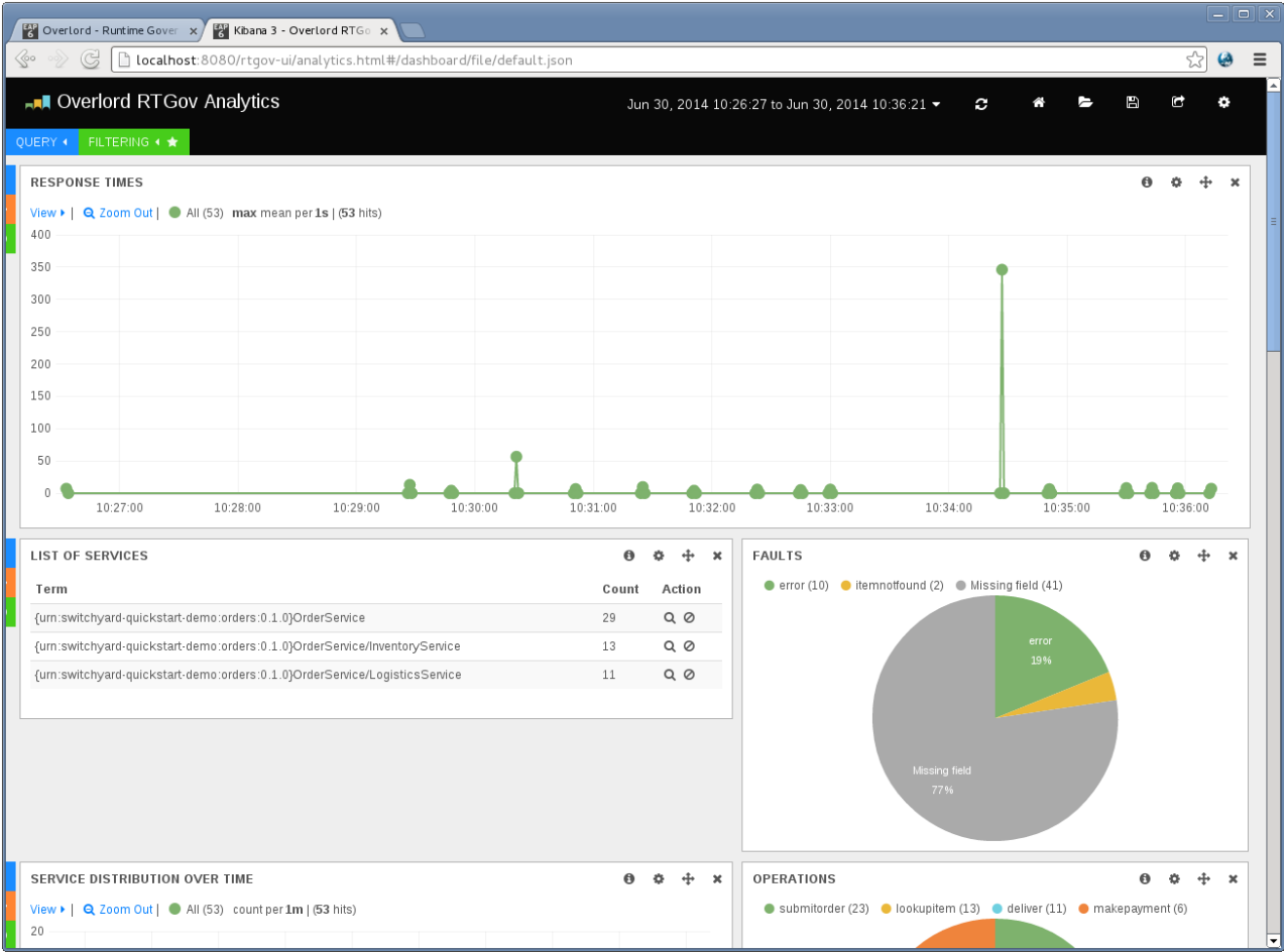


Figure 3.15.

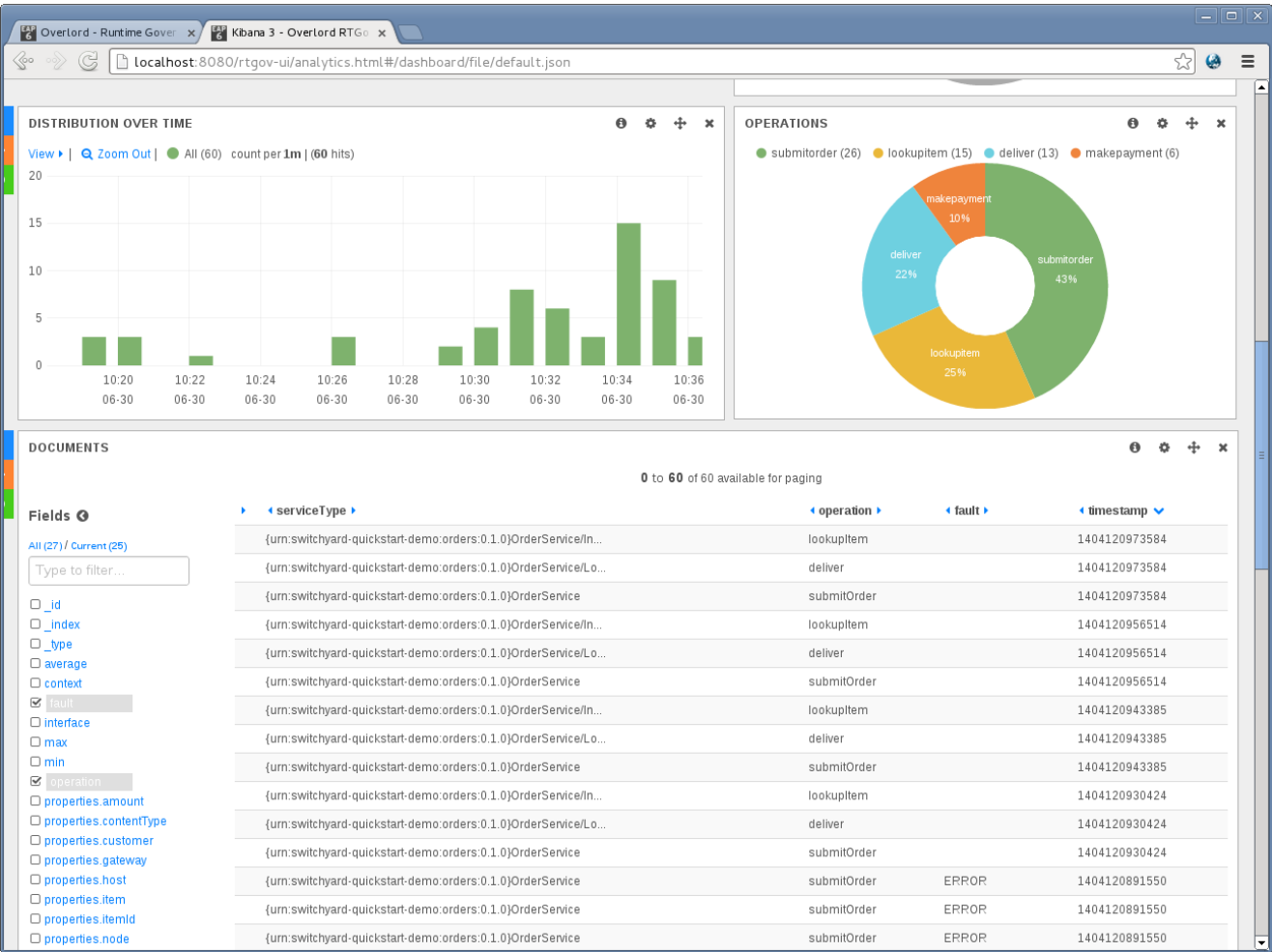


Figure 3.16.

3.4.1.1. Response Times

This graph displays response time information that matches any defined filter. Initially the only filter that is applied is a default time frame showing information over the last 24 hours (see following section on *Changing the Time Frame and Refresh Cycle*).

All response time information will be shown in the same (green) colour. This enables a general indication of performance to be obtained, but to identify specific issues it will be necessary to isolate response times of interest. This can be achieved using "Filtering by query" to only show response times within a particular range.

It is also possible to colour code response time information associated with particular subsets of the information (e.g. for particular service types, or customers, etc). See *Segmenting information by query* section for more information.

3.4.1.2. List of Services

This table shows the list of services. Each service is listed with the number of invocations (count) and actions that can be used to focus or exclude the particular service from the information being viewed.



Note

The service invocation count is based on the information available after all filters have been applied. This means it is possible to identify how many invocations of a particular service have been performed by setting the timeframe (see *Changing the Time Frame and Refresh Cycle*) or filters on other properties (e.g. customer, host, etc).

3.4.1.3. Faults

This pie chart shows the distribution of faults that occur within the filtered response time information being viewed.

The segment labels mean:

- "Missing field" refers to response time information that had no associated fault
- "Error" is a general segment to identify response times associated with unnamed exceptions
- All other values are domain specific fault types (e.g. itemnotfound in this case).

Selecting a region from the pie chart will further focus the dashboard on response time information associated with that category of fault. To cancel the filter, select the "FILTERING" green tab at the top of the page, and either disable or remove the entry matching the fault filter.

3.4.1.4. Distribution over time

This bar charts shows the distribution of the response time information over time, grouped by a specified time interval (initially 1 minute).

When subsets of information are defined, based on *pinned queries*, it is possible to get more interesting results based on colour coded regions. For example, if separate queries are used to represent response times associated with different service types, then the bars will be colour coded to show how much activity occurred on each of the service types.

3.4.1.5. Operations

This pie chart is used to decompose the activities based on the operations that were performed, subject to any other filters that may have been applied.

It is also possible to create an additional filter on the currently viewed information, based on a particular operation, by selecting the operation of interest's segment within the pie chart. To cancel the filter, simply select the "FILTERING" green tab at the top of the page, and either disable or remove the entry matching the operation filter.

3.4.1.6. Documents

This section provides a list of the most recent response time information. The columns provide a small selection of fields from the response time events, with a list of the available fields as checkboxes down the left hand side. This enables the user to select additional fields of interest.

When a row is selected, it will expand to show the complete set of fields from the response time event, with some *action* icons next to each value. If the user selects the magnifying glass, then the dashboard will be additional focused on response time information associated with that field value, and similarly selecting the *no entry sign* will exclude information with that field value.

As mentioned previously, cancelling a particular filter can be achieved by selecting the "FILTERING" green tab at the top of the page, and either disable or remove the entry matching the field filter.

3.4.2. Changing the Time Frame and Refresh Cycle

The Kibana dashboard provides a mechanism for users to define the timeframe of interest, and the refresh interval.

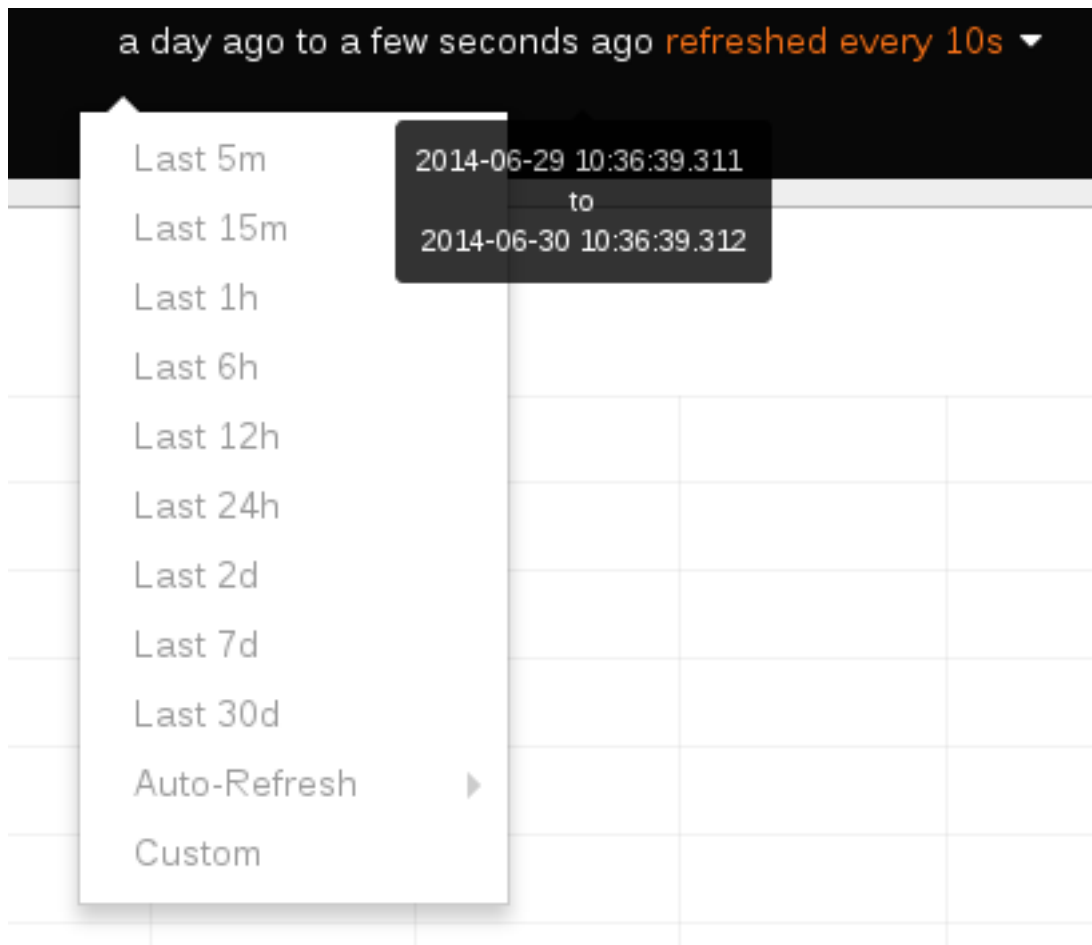


Figure 3.17.

The drop down menu at the top of the dashboard enables the user to select from a default set of time ranges in the past to the current time. If one of the default time ranges is not suitable, then a custom value can be selected.

Similarly, the refresh cycle can be selected from the values in the *Auto-Refresh* sub-menu, or alternatively disabled by selecting *Off*.

However it is also possible to interactively select a region from the response time graph (at the top of the page), to focus the attention of the dashboard on that time period. This creates a time based filter, which can be cancelled by selecting the "FILTERING" green tab at the top of the page, and either disable or remove the entry matching the time filter.

3.4.3. Filtering by selection

The Kibana dashboard enables a user to filter the information being viewed by:

- pressing the *magnifying glass* symbol associated with some information of interest (see action in the image below)

LIST OF SERVICES						
Term	Count	Action				
{urn:switchyard-quickstart-demo:orders:0.1.0}OrderService	32					
{urn:switchyard-quickstart-demo:orders:0.1.0}OrderService/InventoryService	15					
{urn:switchyard-quickstart-demo:orders:0.1.0}OrderService/LogisticsService	13					

Figure 3.18.

- pressing the *no entry sign* symbol associated with the information to be excluded (see action in the image above)
- selecting the information of interest from a pie chart (e.g. selecting a fault, as shown in the image below)

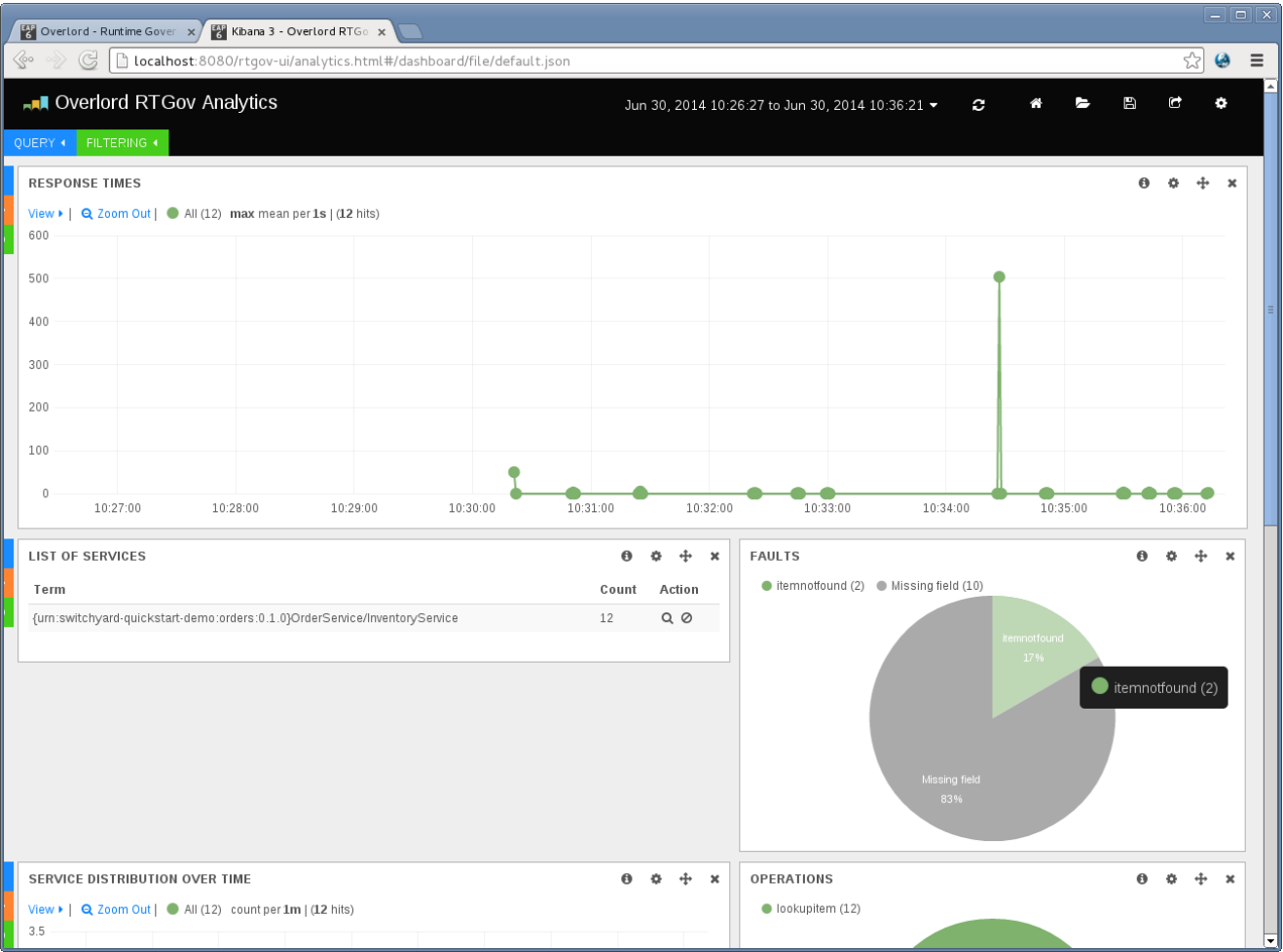


Figure 3.19.

As well as being able to focus/exclude information based on the other graphs, the *Documents* table provides even more fine grained control over what is displayed. In the following image it shows how the `fault` value of `itemnotfound` could be used as a filter, instead of selecting it from the pie chart. However, more importantly adhoc fields such as `customer` or `productName` could be equally used as the subject of the filter, if that information is recorded with the activity events (and therefore the response time data).

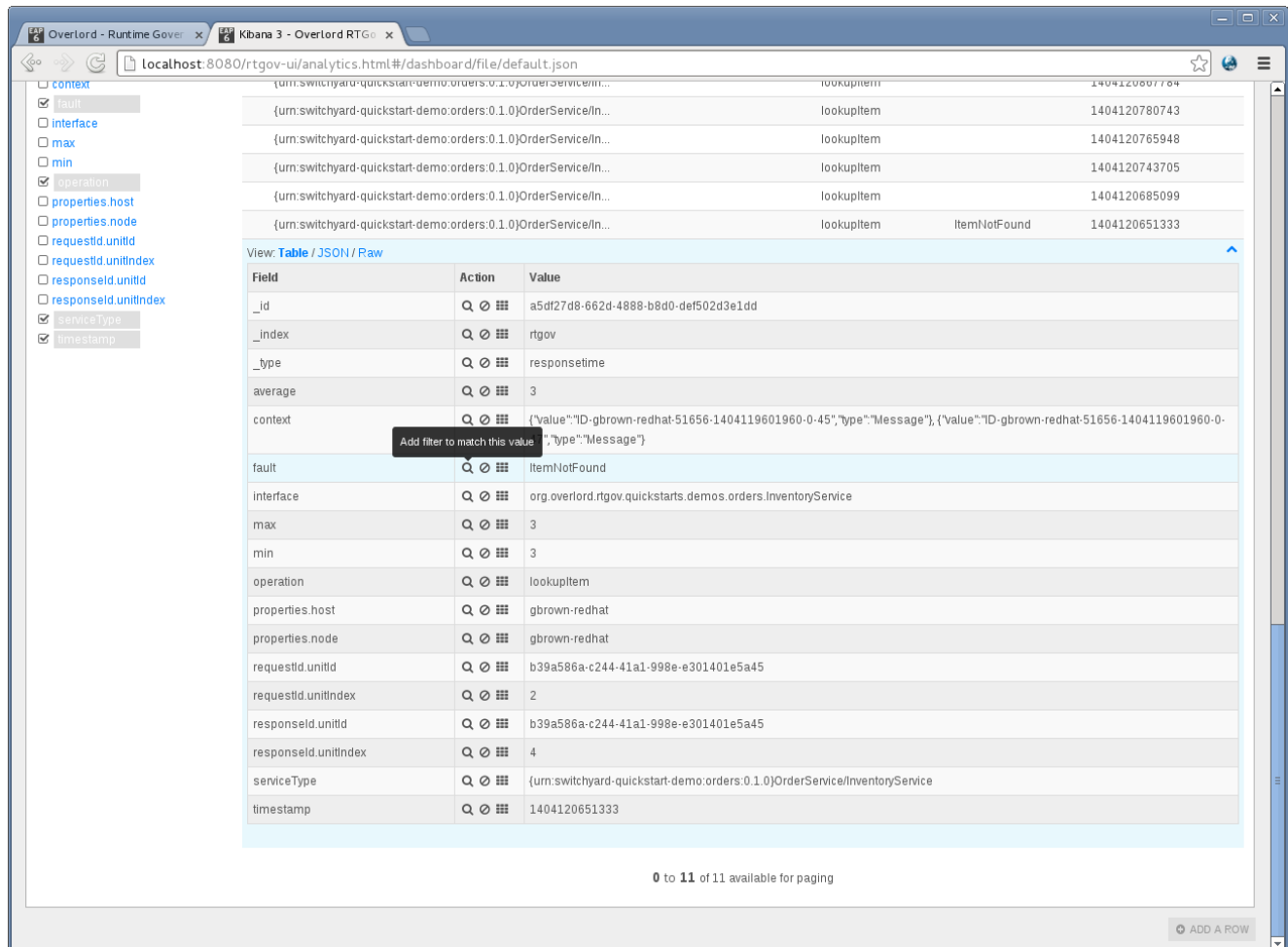


Figure 3.20.

As each filter is added, to progressively refine the results being viewed, their details are listed in the "FILTERING" section at the top of the dashboard, as shown in the following image:

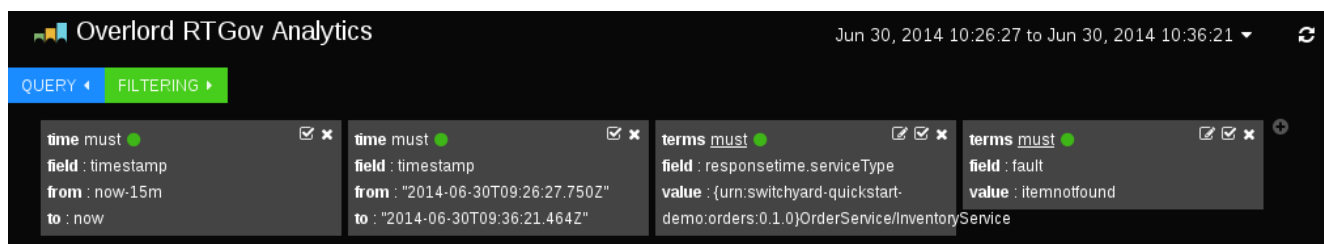


Figure 3.21.

The first box identifies the initial time range used to display the data, which has been refined by the next box based on interactively selecting a region on the response time graph. The third box applies a filter to only show information related to the *InventoryService* service type, and finally the fourth box narrows the information further to show the subset of response time information associated with the *itemnotfound* fault.

Any of these filter criteria can individually be disabled (using the *tick* symbol) or cancelled (using the *cross* symbol).

3.4.4. Segmenting information by query

Although filtering provides a useful way to narrow in on information of interest to view that data in the available graphs. It is sometimes more interesting to be able to compare different sets of results.

In the default dashboard all response time information is treated in the same way, and therefore not differentiated. If we want to segment the information based on various groupings, then we need to create what are called *pinned queries*. At the top of the dashboard, you will need to expand the blue "QUERY" region to find a data entry area. This can be used to enter adhoc queries to filter the results displayed in the dashboard (see following section).

However for the purpose of comparing different sets of data, we leave the default entry blank and instead create one or more additional query fields, but pressing the *plus* symbol present in the last entry field.

When an entry field has been created, enter an appropriate query. For example,

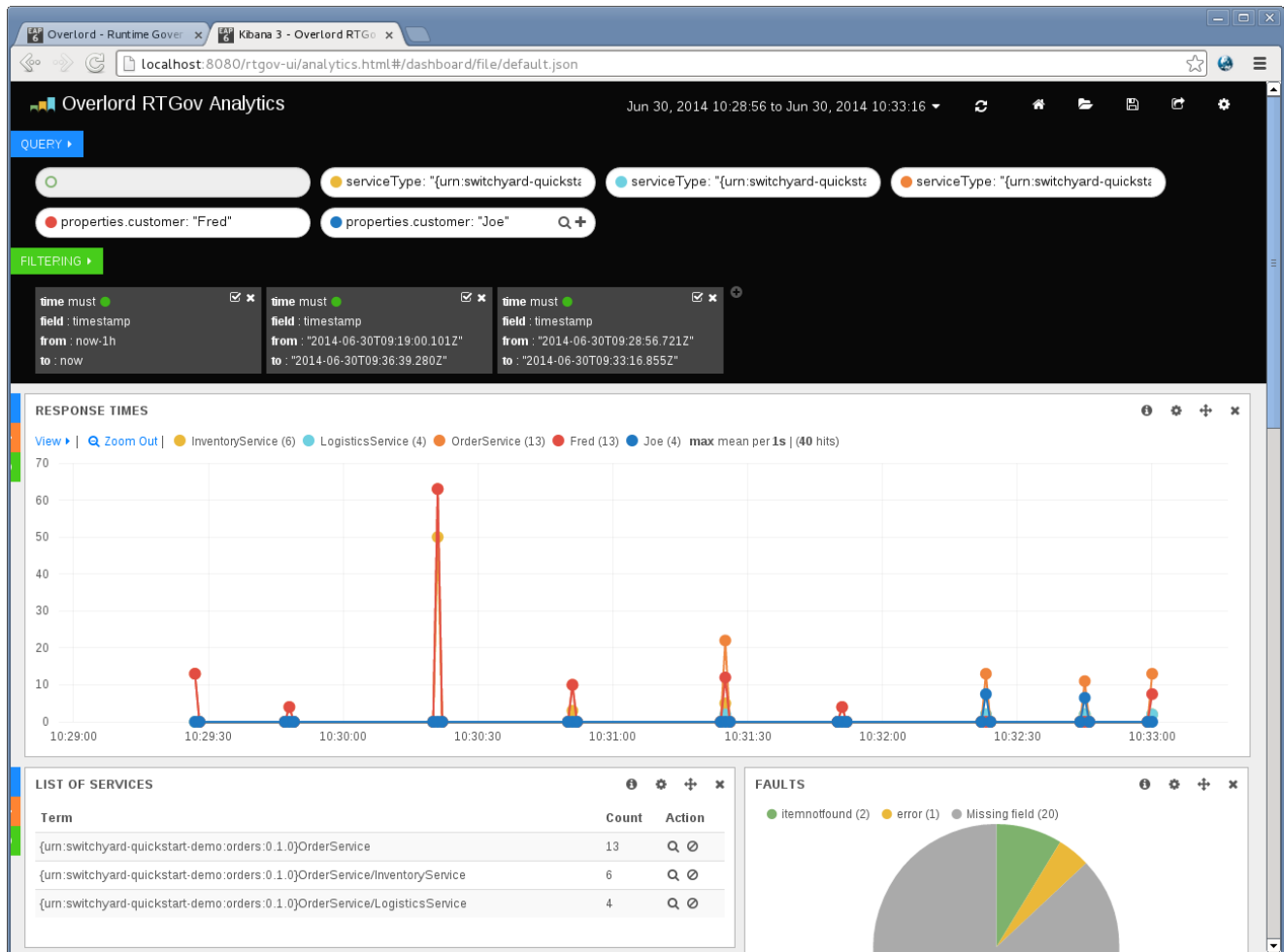
- `serviceType: "{urn:switchyard-quickstart-demo-orders:0.1.0}OrderService/InventoryService"`

This query will identify response times associated with the *InventoryService* service type.

- `properties.customer: "Fred"`

If the customer name has been associated with the reported activity events, then this query will identify the response time information associated with a particular customer.

As shown in the following image, the colour coded segmented queries are reflected in the response time graph:

**Figure 3.22.**

as well as the *Distribution over time* chart:

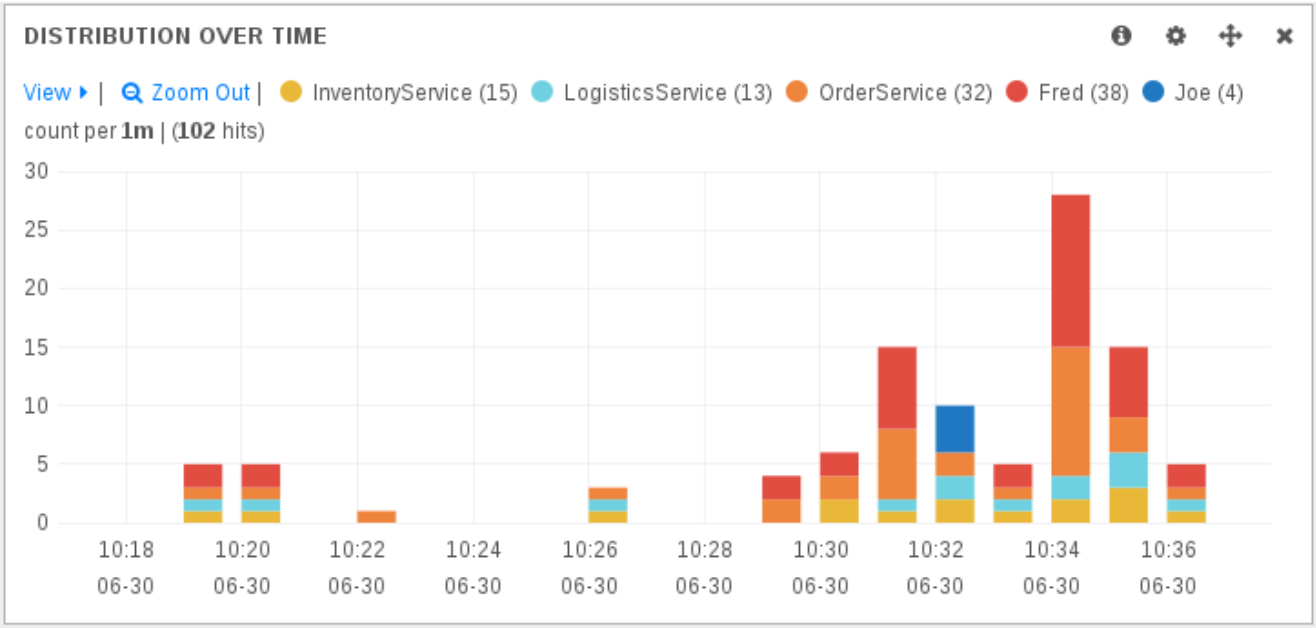


Figure 3.23.

To change the label associated with a query, select the query coloured dot and enter the label in the field, followed by pressing the close button:

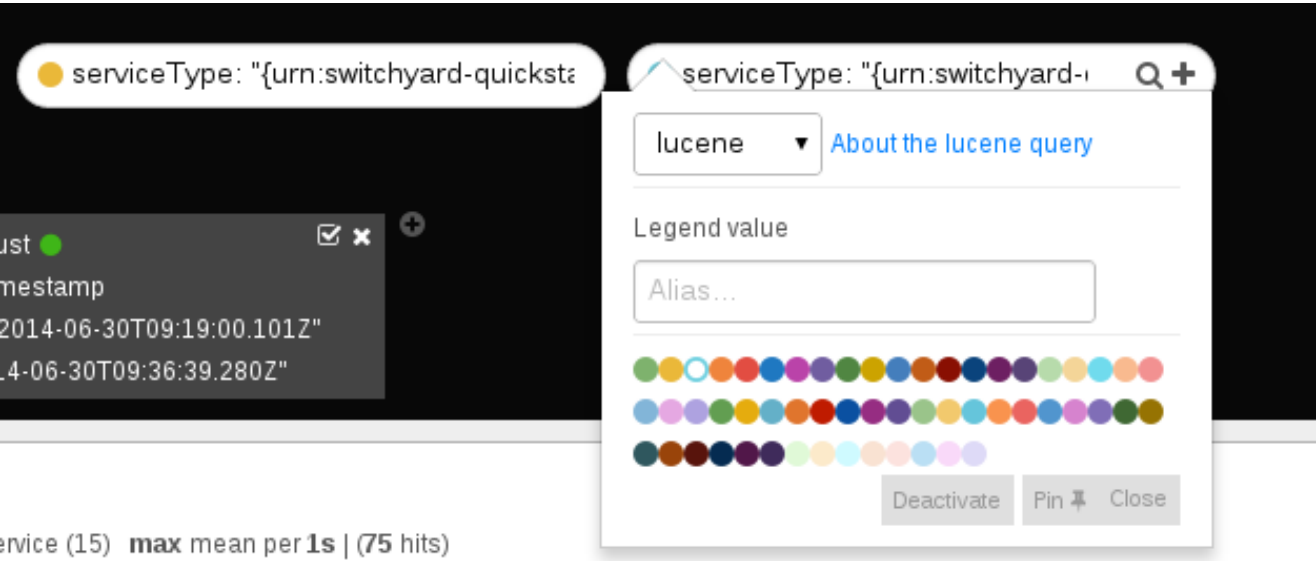


Figure 3.24.

It is also possible to temporarily disable a particular query, or change its colour, using this popup dialog.

3.4.5. Adhoc queries

Some times we need to focus the information on a particular property value or range. For example, if wanting to identify the services involved in increased response times, to locate potential

performance issues, then enter the query "max:>100" to show all response times that are greater than 100 milliseconds:

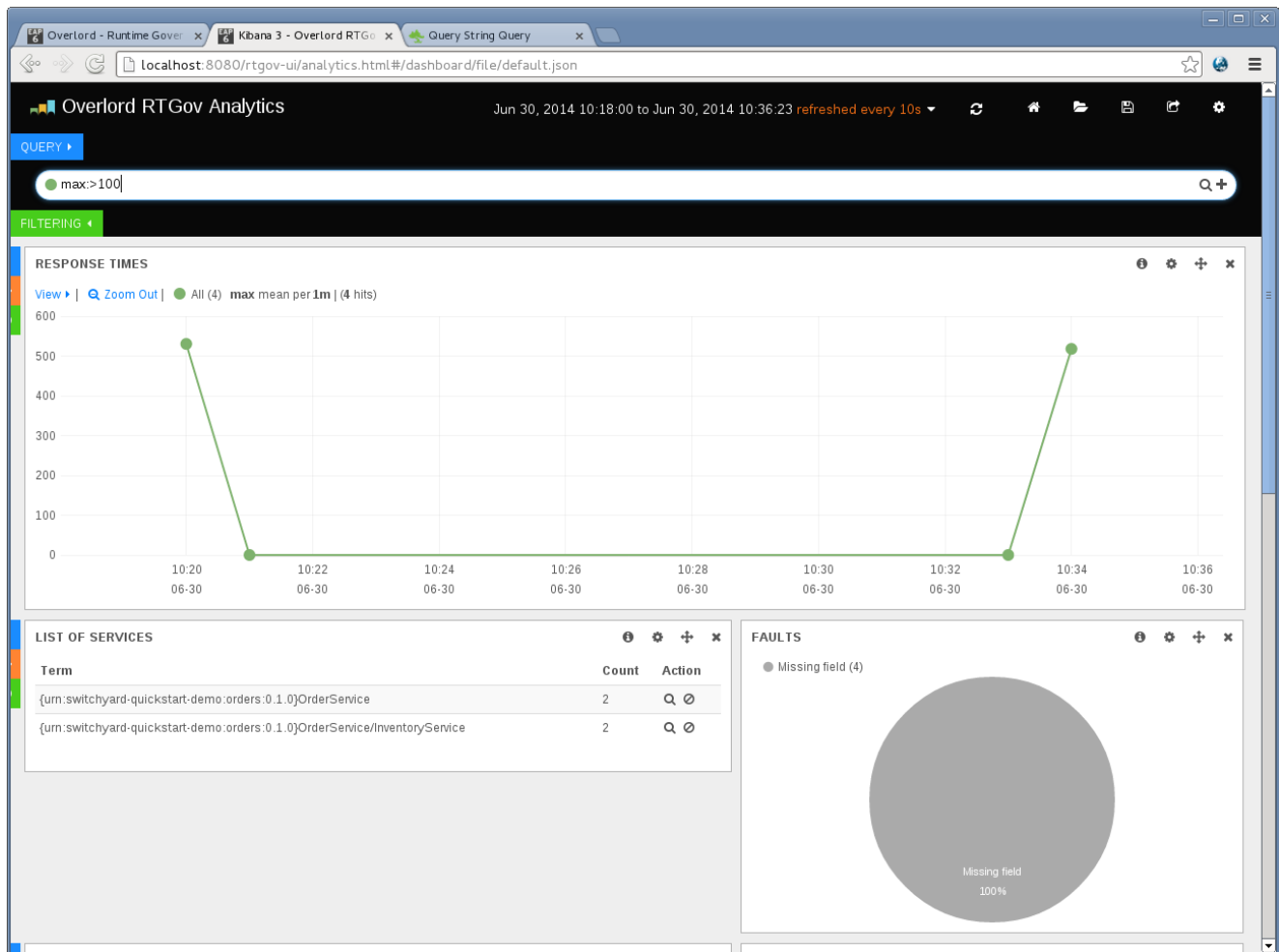


Figure 3.25.

Notice that the *List of Services* table now only includes the list of services that are related to those higher response times. The same applies to the *Operations* pie chart lower in the page. This can be used to pin point the services and operations that are causing the performance problems - and also by examining the *Documents* it is possible to identify other useful information, such as which customer was affected (if that information has been recorded with the activity events).

3.4.6. Customizing and sharing the Dashboard

It is possible to customise the dashboard, adding/removing rows and widgets within rows, configuring the graphs/charts/tables, etc.

Once a custom dashboard has been defined, then it can be saved using the *disc* symbol at the top right of the dashboard:

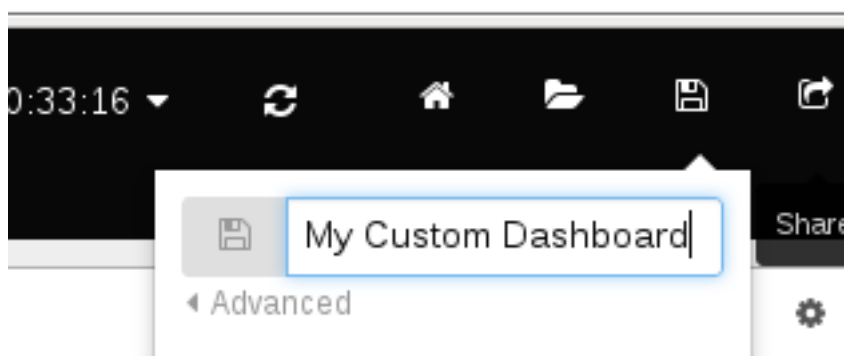


Figure 3.26.

When relaunching the RTGov UI, it is possible to load a custom dashboard using:

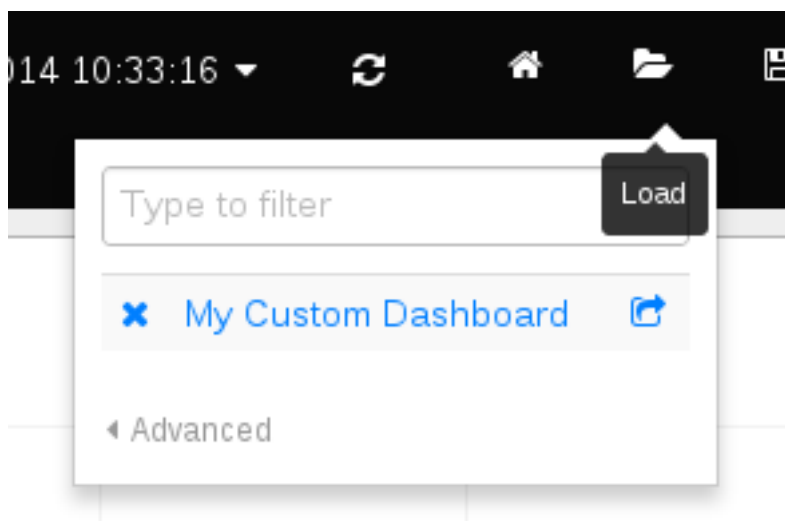


Figure 3.27.

It is also possible to export a custom dashboard to a file, enabling it to be distributed to other interested users, who can then import it into their user account. Select the *save* icon, select *Advanced* and then *Export Schema*.

Chapter 4. Reporting Activity Information

There are two ways in which activity information can be collected for further processing by the Runtime Governance server.

1. Integrating an *activity collector* into the execution environment. This will intercept activities and automatically report them to the Runtime Governance server.
2. Manually report the activity information to the Runtime Governance server through a publicly available API (e.g. REST service)

This section will explain how to use both approaches.

4.1. Integrated Activity Collector

This section will discuss how an integrated activity collector can be used to automatically collect, pre-process and optionally validate activity events before finally reporting them to the server.

4.1.1. Supported Environments

The current version of Runtime Governance only supports the SwitchYard open source SOA platform. To collect activity events from this environment, simply install either the full server (if the execution and governance server are running co-located) or the client installation profile (if reporting events to another server).

4.1.2. Information Processor

To enable the Runtime Governance infrastructure, and the user policies/rules that are defined within it, to make the most effective use of the activities that are reported, it is necessary to pre-process certain events to extract relevant information for use in:

- correlating activity events to a particular business transaction instance
- highlighting important properties that may need to be used in business policies

Extracting the property information is important for various reasons:

- it enables the business policies to remain independent of the specific information format used, and thus more efficiently access the key details (i.e. as properties)
- it is important to control what information is distributed within the activity events, for both size (i.e. performance) and security/privacy reasons.

By default, information content should not be distributed unless an information processor has been defined to explicitly indicate how that information should be represented (if at all) within the activity event.

This section explains how information processors can be configured and deployed along side the business applications they are monitoring.

4.1.2.1. Defining the Information Processors

The Information Processor can be defined as an object model or specified as a JSON representation for packaging in a suitable form, and subsequently de-serialized when deployed to the governed execution environment.

The following is an example of the JSON representation of a list of Information Processors. This particular example accompanies the Order Management sample:

```
[{
  "name": "OrderManagementIP",
  "version": "1",
  "typeProcessors": {
    "{urn:switchyard-quickstart-demo:orders:1.0}submitOrder": {
      "contexts": [{
        "type": "Conversation",
        "evaluator": {
          "type": "xpath",
          "expression": "order/orderId"
        }
      }],
      "properties": [{
        "name": "customer",
        "evaluator": {
          "type": "xpath",
          "expression": "order/customer"
        }
      }],
      "name": "item",
      "evaluator": {
        "type": "xpath",
        "expression": "order/itemId"
      }
    }
  },
  "{urn:switchyard-quickstart-demo:orders:1.0}submitOrderResponse": {
    "contexts": [{
      "type": "Conversation",
      "evaluator": {
        "type": "xpath",
        "expression": "orderAck/orderId"
      }
    }],
    "properties": [{
      "name": "customer",
      "evaluator": {
```

```

        "type": "xpath",
        "expression": "orderAck/customer"
    }
}, {
    "name": "total",
    "evaluator": {
        "type": "xpath",
        "expression": "orderAck/total"
    }
}]
},
"java:org.switchyard.quickstarts.demos.orders.Order": {
    "contexts": [{
        "type": "Conversation",
        "evaluator": {
            "type": "mvel",
            "expression": "orderId"
        }
    }],
    "properties": [{
        "name": "customer",
        "evaluator": {
            "type": "mvel",
            "expression": "customer"
        }
    }],
    {
        "name": "itemId",
        "evaluator": {
            "type": "mvel",
            "expression": "itemId"
        }
    }
}],
},
"java:org.switchyard.quickstarts.demos.orders.OrderAck": {
    "contexts": [{
        "type": "Conversation",
        "evaluator": {
            "type": "mvel",
            "expression": "orderId"
        }
    }],
    "properties": [{
        "name": "customer",
        "evaluator": {
            "type": "mvel",
            "expression": "customer"
        }
    }],
    {
        "name": "total",

```

```
"evaluator":{
  "type":"mvel",
  "expression":"total"
}
}]
},
"{urn:switchyard-quickstart-demo:orders:1.0}makePayment":{
  "properties":[{
    "name":"customer",
    "evaluator":{
      "type":"xpath",
      "expression":"payment/customer"
    }
  },{
    "name":"amount",
    "evaluator":{
      "type":"xpath",
      "expression":"payment/amount"
    }
  }]
},
"{urn:switchyard-quickstart-demo:orders:1.0}makePaymentResponse":{
  "properties":[{
    "name":"customer",
    "evaluator":{
      "type":"xpath",
      "expression":"receipt/customer"
    }
  },{
    "name":"amount",
    "evaluator":{
      "type":"xpath",
      "expression":"receipt/amount"
    }
  }]
},
"java:org.switchyard.quickstarts.demos.orders.Receipt":{
  "properties":[{
    "name":"customer",
    "evaluator":{
      "type":"mvel",
      "expression":"customer"
    }
  },{
    "name":"amount",
    "evaluator":{
      "type":"mvel",
      "expression":"amount"
    }
  }
}
```



```

    }]
  },
  "java:org.switchyard.quickstarts.demos.orders.ItemNotFoundException": {
    "script": {
      "type": "mvel",
      "expression": "activity.fault = \"ItemNotFound\""
    }
  }
}
}
}
}]]

```

This example illustrates the configuration of a single Information Processor with the top level elements:

Field	Description
name	The name of the Information Processor.
version	<p>The version of the Information Processor. If multiple versions of the same named Information Processor are installed, only the newest version will be used. Versions can be expressed using three schemes:</p> <p>Numeric - i.e. simply define the version as a number</p> <p>Dot Format - i.e. 1.5.1.Final</p> <p>Any alpha, numeric and symbols.</p>
typeProcessors	The map of type processors - one per type, with the type name being the map key.

When comparing versions, for example when determining whether a newly deployed Information Processor has a higher version than an existing one with the same name, then initially the versions will be compared as numeric values. If either are not numeric, then they will be compared using dot format, with each field being compared first as numeric values, and if not based on lexical comparison. If both fields don't have a dot, then they will just be compared lexically.

Type Processor

The type processor element is associated with a particular information type (i.e. as its key). The fields associated with this component are:

Field	Description
contexts	The list of context evaluators.
properties	The list of property evaluators.
script	An optional script evaluator that is used to do any other processing that may be required,

Field	Description
	such as setting additional properties in the activity event that are not necessarily derived from message content information.
transformer	An optional transformer that determines how this information type will be represented within an activity event.

Context Evaluator

The fields associated with the Context Evaluator component are:

Field	Description
type	The context type, e.g. Conversation, Endpoint, Message or Link. These types are explained below.
timeframe	The number of milliseconds associated with a <i>Link</i> context type. If not specified, then the context is assumed to represent the destination of the link, so the source of the link must define the timeframe.
header	The optional header name. If not defined, then the expression will be applied to the information content to obtain the context value.
evaluator	The expression evaluator used to derived the context value. See further down for details.

The context types represent different ways in which the activity events can be related to each other or to a logical grouping (e.g. business transaction). Not all activity events need to be associated directly with a global business transaction id. They can be indirectly associated based on transitive correlation - e.g. activity 1 is associated with the global business transaction id, activity 2 is associated with activity 1 by a message context type, and activity 3 is associated with activity 2 based on an endpoint correlation id. All three activity events will be collectively correlated to the business transaction id.

An explanation of the different context types is,

Context Type	Explanation
Conversation	A conversation identifier can be used to correlate activity events to a business transaction associated with a globally unique identifier (e.g. an order id).
Endpoint	A globally unique identifier associated with one endpoint in a business transaction. For

Context Type	Explanation
	example, a process instance id associated with the business process executing within a service playing a particular role in the business transaction.
Message	The globally unique identify of a message being sent from one party to another.
Link	A temporal link between a source and destination activity. The temporal nature of the association is intended to enable non-globally unique details to be used to correlate activities, where the id is considered unique within the defined timeframe.

Property Evaluator

The fields associated with the Property Evaluator component are:

Field	Description
name	The property name being initialized.
header	The optional header name. If not defined, then the expression will be applied to the information content to obtain the property value.
evaluator	The expression evaluator used to derive the property value. See further down for details.

Expression Evaluator

In the context and property evaluator components, they reference an expression evaluator that is used to derive their value. The expression evaluator has the following fields:

Field	Description
type	The type of expression evaluator to use. Currently only support mvel or xpath .
expression	The expression to evaluate.
optional	Optional field that indicates whether the value being extracted by the expression is optional. The default is false. If a value is not optional, but the expression fails to locate a value, then an error will be reported

These expressions operate on the information being processed, to return a string value to be applied to the appropriate context or property.

Script

The script field of the Type Processor has the following fields:

Field	Description
type	The type of script evaluator to use. Currently only support mvel .
expression	The expression to evaluate.

The MVEL script evaluator is supplied two variables for its use:

- information - The information being processed
- activity - The activity event

An example of how this script can be used is shown in the example above, associated with the *ItemNotFoundException*. In this case, the message on the wire does not carry the fault name, so the information processor is used to set the *fault* field on the activity event.

Transformer

The transformer field of the Type Processor has the following fields:

Field	Description
type	The type of transformer to use. Currently support serialize and mvel .

The *serialize* transformer does not take any other properties. It simply attempts to convert the representation of the information into a textual form for inclusion in the activity event. So this transformer type can be used where the complete information content is required.

The *mvel* transformer takes the following additional fields:

The MVEL transformer script is supplied the following variable for its use:

Field	Description
expression	The mvel expression to transform the supplied information.

The MVEL transformer is supplied the following variable for its use:

- information - The information being processed

For example, to include the content of the submitOrder message:

```
"typeProcessors": {
  "{urn:switchyard-quickstart-demo:orders:1.0}submitOrder": {
    ....
    "transformer": {
      "type": "serialize"
```

```
}
},
```

4.1.2.2. Registering the Information Processors

JEE Container

The Information Processors are deployed within the JEE container as a WAR file with the following structure:

```
warfile
|
| -META-INF
|   | - beans.xml
|
| -WEB-INF
|   | -classes
|   |   | -ip.json
|   |   | -<custom classes/resources>
|   |
|   | -lib
|       | -ip-loader-jee.jar
|       | -<additional libraries>
```

The `ip.json` file contains the JSON representation of the Information Processor configuration.

The `ip-loader-jee.jar` acts as a bootstrapper to load and register the Information Processors.

If custom classes are defined, then the associated classes and resources can be defined in the `WEB-INF/classes` folder or within additional libraries located in the `WEB-INF/lib` folder.

A maven `pom.xml` that will create this structure is:

```
<project xmlns="http://maven.apache.org/POM/4.0.0" xmlns:xsi="http://
www.w3.org/2001/XMLSchema-instance"
    xsi:schemaLocation="http://maven.apache.org/POM/4.0.0 http://
maven.apache.org/maven-v4_0_0.xsd">
    <modelVersion>4.0.0</modelVersion>
    <groupId>...</groupId>
    <artifactId>...</artifactId>
    <version>...</version>
    <packaging>war</packaging>
    <name>...</name>

    <properties>
        <rtgov.version>...</rtgov.version>
    </properties>

    <dependencies>
        <dependency>
```

```
<groupId>org.overlord.rtgov.activity-management</groupId>
<artifactId>activity</artifactId>
<version>${rtgov.version}</version>
<scope>provided</scope>
</dependency>
<dependency>
  <groupId>org.overlord.rtgov.activity-management</groupId>
  <artifactId>ip-loader-jee</artifactId>
  <version>${rtgov.version}</version>
</dependency>
....
</dependencies>

</project>
```

If deploying in JBoss Application Server, then the following fragment also needs to be included, to define the dependency on the core Overlord Runtime Governance modules:

```
.....
<build>
  <finalName>...</finalName>
  <plugins>
    <plugin>
      <artifactId>maven-war-plugin</artifactId>
      <configuration>
        <failOnMissingWebXml>false</failOnMissingWebXml>
        <archive>
          <manifestEntries>
            <Dependencies>deployment.overlord-rtgov.war</Dependencies>
          </manifestEntries>
        </archive>
      </configuration>
    </plugin>
  </plugins>
</build>
.....
```

OSGi Container

The Information Processors are deployed within the OSGi container as a JAR file with the following structure:

```
jarfile
|
| -META-INF
|   | - MANIFEST.MF
|
| -ip.json
| -ip-loader-osgi.jar
```

```
|-<custom classes/resources>
|-<additional libraries>
```

The `ip.json` file contains the JSON representation of the Information Processor configuration.

The `ip-loader-osgi.jar` acts as a bootstrapper to load and register the Information Processors.

If custom classes are defined, then any associated classes, resources and additional libraries are located in the top level folder.

A maven `pom.xml` that will create this structure is:

```
<project xmlns="http://maven.apache.org/POM/4.0.0" xmlns:xsi="http://
www.w3.org/2001/XMLSchema-instance"
    xsi:schemaLocation="http://maven.apache.org/POM/4.0.0 http://
maven.apache.org/maven-v4_0_0.xsd">
    <modelVersion>4.0.0</modelVersion>
    <groupId>...</groupId>
    <artifactId>...</artifactId>
    <version>...</version>
    <packaging>war</packaging>
    <name>...</name>

    <properties>
        <rtgov.version>...</rtgov.version>
    </properties>

    <dependencies>
        <dependency>
            <groupId>org.overlord.rtgov.activity-management</groupId>
            <artifactId>activity</artifactId>
            <version>${rtgov.version}</version>
            <scope>provided</scope>
        </dependency>
        <dependency>
            <groupId>org.overlord.rtgov.activity-management</groupId>
            <artifactId>ip-loader-osgi</artifactId>
            <version>${rtgov.version}</version>
        </dependency>
        ....
    </dependencies>

    <build>
        <finalName>...</finalName>
        <resources>
            <resource>
                <directory>src/main/resources</directory>
                <filtering>true</filtering>
            </resource>
        </resources>
```

```
<plugins>
<plugin>
  <groupId>org.apache.felix</groupId>
  <artifactId>maven-bundle-plugin</artifactId>
  <extensions>true</extensions>
  <configuration>
    <instructions>
      <Bundle-SymbolicName>${project.artifactId}</Bundle-SymbolicName>
      <Bundle-Version>${project.version}</Bundle-Version>
      <Bundle-
Activator>org.overlord.rtgov.activity.processor.loader.osgi.IActivator</
Bundle-Activator>
      <Import-Package>
        !javax.inject.*,!javax.enterprise.*,!javax.persistence.*,
        . . . . ,
        *
      </Import-Package>
      <Embed-Dependency>*;scope=compile|runtime</Embed-Dependency>
    </instructions>
  </configuration>
</plugin>
</plugins>
</build>
</project>
```

4.1.3. Activity Validation

The Activity Validator mechanism provides the means to install event processing capabilities within the activity collection environment (i.e. co-located with the execution of the business transaction).

The main reason for performing analysis of the activity events at this stage in the runtime governance lifecycle is to enable the analysis to potential block the business transaction. For an example of such a case, please see the synchronous policy sample.

In some execution environments these validators can be implicitly called as part of collecting the activity events. However in some environments these validators need to be explicitly invoked, as they impact the execution behaviour. The SwitchYard environment is an example of this later environment, where an *interceptor* needs to be explicitly included within the SwitchYard application, which is responsible for invoking the validation capability and reacting to any issues it detects. To see how to configure such an interceptor, please see the synchronous policy sample.

4.1.3.1. Defining the Activity Validators

The Activity Validator can be defined as an object model or specified as a JSON representation for packaging in a suitable form, and subsequently de-serialized when deployed to the governed execution environment.

The following is an example of the JSON representation of a list of Activity Validators. This particular example is from the synchronous policy sample:


```
[{
  "name" : "RestrictUsage",
  "version" : "1",
  "predicate" : {
    "@class" : "org.overlord.rtgov.ep.mvel.MVELPredicate",
    "expression" : "event instanceof
org.overlord.rtgov.activity.model.soa.RequestReceived && event.serviceType
== \"{urn:switchyard-quickstart-demo:orders:0.1.0}OrderService\""
  },
  "eventProcessor" : {
    "@class" : "org.overlord.rtgov.ep.mvel.MVELEventProcessor",
    "script" : "VerifyLastUsage.mvel",
    "services" : {
      "CacheManager" : {
        "@class" :
"org.overlord.rtgov.common.infinispan.service.InfinispanCacheManager"
      }
    }
  }
}]
```

This example illustrates the configuration of a single Activity Validator with the top level elements:

Field	Description
name	The name of the Activity Validator.
version	<p>The version of the Activity Validator. If multiple versions of the same named Activity Validator are installed, only the newest version will be used. Versions can be expressed using three schemes:</p> <p>Numeric - i.e. simply define the version as a number</p> <p>Dot Format - i.e. 1.5.1.Final</p> <p>Any alpha, numeric and symbols.</p>
predicate	The optional implementation of the <code>org.overlord.rtgov.ep.Predicate</code> interface, used to determine if the activity event is relevant and therefore should be supplied to the event processor
eventProcessor	The implementation of the <code>org.overlord.rtgov.ep.EventProcessor</code> interface, that is used to analyse the activity event

When comparing versions, for example when determining whether a newly deployed Activity Validator has a higher version than an existing one with the same name, then initially the versions will be compared as numeric values. If either are not numeric, then they will be compared using dot format, with each field being compared first as numeric values, and if not based on lexical comparison. If both fields don't have a dot, then they will just be compared lexically.

4.1.3.2. Registering the Activity Validators

JEE Container

The Activity Validators are deployed within the JEE container as a WAR file with the following structure:

```
warfile
|
| -META-INF
|   | - beans.xml
|
| -WEB-INF
|   | -classes
|   |   | -av.json
|   |   | -<custom classes/resources>
|   |
|   | -lib
|       | -av-loader-jee.jar
|       | -<additional libraries>
```

The `av.json` file contains the JSON representation of the Activity Validator configuration.

The `av-loader-jee.jar` acts as a bootstrapper to load and register the Activity Validators.

If custom classes are defined, then the associated classes and resources can be defined in the `WEB-INF/classes` folder or within additional libraries located in the `WEB-INF/lib` folder.

A maven `pom.xml` that will create this structure is:

```
<project xmlns="http://maven.apache.org/POM/4.0.0" xmlns:xsi="http://
www.w3.org/2001/XMLSchema-instance"
    xsi:schemaLocation="http://maven.apache.org/POM/4.0.0 http://
maven.apache.org/maven-v4_0_0.xsd">
    <modelVersion>4.0.0</modelVersion>
    <groupId>...</groupId>
    <artifactId>...</artifactId>
    <version>...</version>
    <packaging>war</packaging>
    <name>...</name>

    <properties>
        <rtgov.version>...</rtgov.version>
```

```

</properties>

<dependencies>
  <dependency>
    <groupId>org.overlord.rtgov.activity-management</groupId>
    <artifactId>activity</artifactId>
    <version>${rtgov.version}</version>
    <scope>provided</scope>
  </dependency>
  <dependency>
    <groupId>org.overlord.rtgov.activity-management</groupId>
    <artifactId>av-loader-jee</artifactId>
    <version>${rtgov.version}</version>
  </dependency>
  ....
</dependencies>

</project>

```

If deploying in JBoss Application Server, then the following fragment also needs to be included, to define the dependency on the core Overlord Runtime Governance modules:

```

.....
<build>
  <finalName>...</finalName>
  <plugins>
    <plugin>
      <artifactId>maven-war-plugin</artifactId>
      <configuration>
        <failOnMissingWebXml>false</failOnMissingWebXml>
        <archive>
          <manifestEntries>
            <Dependencies>deployment.overlord-rtgov.war</Dependencies>
          </manifestEntries>
        </archive>
      </configuration>
    </plugin>
  </plugins>
</build>
.....

```

OSGi Container

The Activity Validators are deployed within the OSGi container as a JAR file with the following structure:

```

jarfile
|
| -META-INF

```

```
|      | - MANIFEST.MF
|
| -av.json
| -av-loader-osgi.jar
| -<custom classes/resources>
| -<additional libraries>
```

The `av.json` file contains the JSON representation of the Activity Validator configuration.

The `av-loader-osgi.jar` acts as a bootstrapper to load and register the Activity Validators.

If custom classes are defined, then any associated classes, resources and additional libraries can be located in the top level folder.

A maven `pom.xml` that will create this structure is:

```
<project xmlns="http://maven.apache.org/POM/4.0.0" xmlns:xsi="http://
www.w3.org/2001/XMLSchema-instance"
    xsi:schemaLocation="http://maven.apache.org/POM/4.0.0 http://
maven.apache.org/maven-v4_0_0.xsd">
    <modelVersion>4.0.0</modelVersion>
    <groupId>...</groupId>
    <artifactId>...</artifactId>
    <version>...</version>
    <packaging>war</packaging>
    <name>...</name>

    <properties>
        <rtgov.version>...</rtgov.version>
    </properties>

    <dependencies>
        <dependency>
            <groupId>org.overlord.rtgov.activity-management</groupId>
            <artifactId>activity</artifactId>
            <version>${rtgov.version}</version>
            <scope>provided</scope>
        </dependency>
        <dependency>
            <groupId>org.overlord.rtgov.activity-management</groupId>
            <artifactId>av-loader-osgi</artifactId>
            <version>${rtgov.version}</version>
        </dependency>
        ....
    </dependencies>

    <build>
        <finalName>...</finalName>
        <resources>
            <resource>
```

```

    <directory>src/main/resources</directory>
    <filtering>true</filtering>
  </resource>
</resources>
<plugins>
  <plugin>
    <groupId>org.apache.felix</groupId>
    <artifactId>maven-bundle-plugin</artifactId>
    <extensions>true</extensions>
    <configuration>
      <instructions>
        <Bundle-SymbolicName>${project.artifactId}</Bundle-SymbolicName>
        <Bundle-Version>${project.version}</Bundle-Version>
        <Bundle-Activator>org.overlord.rtgov.activity.validator.loader.osgi.AVActivator</Bundle-Activator>
      </instructions>
      <Import-Package>
        !javax.inject.*,!javax.enterprise.*,!javax.persistence.*,
        .....;
        *
      </Import-Package>
      <Embed-Dependency>*;scope=compile|runtime</Embed-Dependency>
    </configuration>
  </plugin>
</plugins>
</build>

</project>

```

4.2. Reporting and Querying Activity Events via REST

This section explains how activity information can be reported to, and queried from, the Activity Server via a RESTful service.

4.2.1. Reporting Activity Information

POST request to URL: <host>/overlord-rtgov/activity/store

The service uses basic authentication, with the default username `admin` and password `overlord`.

The request contains the list of `ActivityUnit` objects encoded in JSON. (See `org.overlord.rtgov.activity.model.ActivityUnit` class within the API documentation, as the root component of this configuration). For example,

```

[ {
  "id": "TestId1",
  "activityTypes": [ {
    "type": "RequestSent",

```

```
    "context": [{
      "value": "12345"
    }, {
      "value": "abc123",
      "type": "Endpoint"
    }, {
      "value": "ABC123",
      "type": "Message"
    }
  ],
  "content": "....",
  "serviceType": "{http://service}OrderService",
  "operation": "buy",
  "fault": "MyFault",
  "messageType": "{http://message}OrderRequest",
  "timestamp": 1347028592880
}, {
  "type": "ResponseReceived",
  "context": [{
    "value": "12345"
  }, {
    "value": "ABC124",
    "type": "Message"
  }
  ],
  "content": "....",
  "serviceType": "{http://service}OrderService",
  "operation": "buy",
  "fault": "OutOfStock",
  "messageType": "{http://message}OutOfStock",
  "replyToId": "ABC123",
  "timestamp": 1347028593010
}],
"origin": {
  "host": "Saturn",
  "principal": "Fred",
  "node": "Saturn1",
  "thread": "Thread-1"
}
}, {
  ....
}]
```

4.2.2. Querying Activity Events using an Expression

POST request to URL: <host>/overlord-rtgov/activity/query

The service uses basic authentication, with the default username `admin` and password `overlord`.

The request contains the JSON encoding of the Query Specification (see API documentation for `+org.overlord.rtgov.activity.server.QuerySpec+`) which has the following properties:

Property	Description
fromTimestamp	Optionally specifies the start date/time for the activity units required. If not specified, then the query will apply to activity units from the first one recorded.
toTimestamp	Optionally specifies the end date/time for the activity units required. If not specified, then the query will relate up to the most recently recorded activity units.
expression	An optional expression that can be used to specify the activity events of interest.
format	Optionally specifies the format of the expression. The value must be supported by the configured activity store. The only supported format currently is "jqpl" (Java Persistence Query Language).

The response contains a list of `ActivityType` objects encoded in JSON, which would be similar in form to the example shown above when recording a list of activity units. (See API documentation for `org.overlord.rtgov.activity.model.ActivityType`).

4.2.3. Retrieving an Activity Unit

GET request to URL: `<host>/overlord-rtgov/activity/unit?id=<unitId>`

The service uses basic authentication, with the default username `admin` and password `overlord`.

The `<unitId>` represents the identifier associated with the `ActivityUnit` that is being retrieved encoded in JSON. (See API documentation for `org.overlord.rtgov.activity.model.ActivityUnit`).

4.2.4. Retrieve Activity Events associated with a Context Value

GET request to URL: `<host>/overlord-rtgov/activity/events?type=<contextType>&value=<identifier>`

The service uses basic authentication, with the default username `admin` and password `overlord`.

The `<contextType>` represents the context type, e.g. Conversation, Endpoint, Message or Link. This is explained in the Information Processor section of this chapter, or see the API documentation for `org.overlord.rtgov.activity.model.Context.Type`.

The `<identifier>` represents the correlation value associated with the `ActivityType(s)` that are being retrieved.

Two additional optional query parameters can be provided, `start` being the start timestamp, and `end` for the end timestamp. These parameters can be used to scope the time period of the query.

The response is a list of `ActivityType` objects (see `org.overlord.rtgov.activity.model.ActivityType` in the API documentation) encoded in JSON.

Chapter 5. Analyzing Events

5.1. Configuring an Event Processor Network

An Event Processor Network is a mechanism for processing a stream of events through a network of linked nodes established to perform specific filtering, transformation and/or analysis tasks.

5.1.1. Defining the Network

The network can be defined as an object model or specified as a JSON representation for packaging in a suitable form, and subsequently de-serialized when deployed to the runtime governance server.

The following is an example of the JSON representation of an Event Processor Network. This particular example defines the "out of the box" EPN installed with the distribution:

```
{
  "name" : "Overlord-RTGov-EPN",
  "version" : "1.0.0.Final",
  "subscriptions" : [ {
    "nodeName" : "SOAEvents",
    "subject" : "ActivityUnits"
  },
  {
    "nodeName" : "ServiceDefinitions",
    "subject" : "ActivityUnits"
  },
  {
    "nodeName" : "SituationsStore",
    "subject" : "Situations"
  } ],
  "nodes" : [
    {
      "name" : "SOAEvents",
      "sourceNodes" : [ ],
      "destinationSubjects" : [ "SOAEvents" ],
      "maxRetries" : 3,
      "retryInterval" : 0,
      "eventProcessor" : {
        "@class" :
"org.overlord.rtgov.content.epn.SOAActivityTypeEventSplitter"
      },
      "predicate" : null,
      "notifications" : [ ]
    }, {
      "name" : "ServiceDefinitions",
      "sourceNodes" : [ ],
```

```
"destinationSubjects" : [ ],
"maxRetries" : 3,
"retryInterval" : 0,
"eventProcessor" : {
  "@class" :
"org.overlord.rtgov.content.epn.ServiceDefinitionProcessor"
},
"predicate" : null,
"notifications" : [ {
  "type" : "Results",
  "subject" : "ServiceDefinitions"
} ]
},{
  "name" : "ServiceResponseTimes",
  "sourceNodes" : [ "ServiceDefinitions" ],
  "destinationSubjects" : [ "ServiceResponseTimes" ],
  "maxRetries" : 3,
  "retryInterval" : 0,
  "eventProcessor" : {
    "@class" :
"org.overlord.rtgov.content.epn.ServiceResponseTimeProcessor"
  },
  "predicate" : null,
  "notifications" : [ {
    "type" : "Results",
    "subject" : "ServiceResponseTimes"
  } ]
},{
  "name" : "SituationsStore",
  "maxRetries" : 3,
  "retryInterval" : 0,
  "eventProcessor" : {
    "@class" : "org.overlord.rtgov.ep.jpa.JPAEventProcessor",
    "entityManager" : "overlord-rtgov-epn-non-jta"
  }
}
]
}
```

Another example of a network, used within one of the quickstarts is:

```
{
  "name" : "AssessCreditPolicyEPN",
  "version" : "${project.version}",
  "subscriptions" : [ {
    "nodeName" : "AssessCredit",
    "subject" : "SOAEvents"
  } ],
  "nodes" : [
```

```

{
  "name" : "AssessCredit",
  "sourceNodes" : [ ],
  "destinationSubjects" : [ ],
  "maxRetries" : 3,
  "retryInterval" : 0,
  "predicate" : {
    "@class" : "org.overlord.rtgov.ep.mvel.MVELPredicate",
    "expression" : "event.serviceProvider && !event.request
&& event.serviceType == \"{urn:switchyard-quickstart-
demo:orders:0.1.0}OrderService\""
  },
  "eventProcessor" : {
    "@class" : "org.overlord.rtgov.ep.mvel.MVELEventProcessor",
    "script" : "AssessCredit.mvel",
    "services" : {
      "CacheManager" : {
        "@class" :
"org.overlord.rtgov.common.infinispan.service.InfinispanCacheManager"
      }
    },
    "parameters" : {
      "creditLimit" : 150
    }
  }
}
]
}

```

This example illustrates the configuration of a service associate with the event processor, as well as a predicate.

The top level elements of this descriptor are:

Field	Description
name	The name of the network.
subscriptions	The list of subscriptions associated with the network, discussed below.
nodes	The nodes that form the connected graph within the network, discussed below.
version	<p>The version of the network. Versions can be expressed using three schemes:</p> <p>Numeric - i.e. simply define the version as a number</p> <p>Dot Format - i.e. 1.5.1.Final Any alpha, numeric and symbols</p>

When comparing versions, for example when determining whether a newly deployed EPN has a higher version than an existing network with the same name, then initially the versions will be compared as numeric values. If either are not numeric, then they will be compared using dot format, with each field being compared first as numeric values, and if not based on lexical comparison. If both fields don't have a dot, then they will just be compared lexically.

5.1.1.1. Subscription

The subscription element is used to define a subject that the network is interested in, and the name of the node to which the events from that subject should be routed.

This decoupled subscription approach enables multiple networks to register their interest in events from the same subject. Equally multiple nodes within the same network could subscribe to the same subject.

The fields associated with this component are:

Field	Description
Subject	The subject to subscribe to.
nodeName	The name of the node within the network to route the events to.

Reserved subjects

This is a list of the subjects that are reserved for Overlord's use:

Subject	Purpose
ActivityUnits	This subject is used to publish events of the type <code>org.overlord.rtgov.activity.model.ActivityUnit</code> , produced when activity information is recorded with the Activity Server.

5.1.1.2. Node

This element is used to define a particular node in the graph that forms the network, and has the following fields:

Field	Description
name	The name of the node.
sourceNodes	A list of node names that represent the source nodes, within the same network, that this node receives its events from. Therefore, if this list is empty, it means that the node

Field	Description
	is a <i>root</i> node and should be the target of a subscription.
destinationSubjects	A list of inter-EPN subjects to publish any resulting events to. Note: these subjects are only of relevance to other networks.
maxRetries	The maximum number of times an event should be retried, following a failure, before giving up on the event.
retryInterval	The delay that should occur between retry attempts - may only be supported in some environments.
eventProcessor	Defines the details for the event processor implementation being used. At a minimum, the value for this field should define a <code>@class</code> property to specify the Java class name for the event process implementation to use. Other general fields that can be configured are, the map of services and the map of parameters that can be used by the event processor. Depending upon which implementation is selected, the other fields within the value will apply to the event processor implementation.
predicate	This field is optional, but if specified will define a predicate implementation. As with the event processor, it must at a minimum define a <code>@class</code> field that specifies the Java class name for the implementation, with any additional fields be used to initialize the predicate implementation.
notifications	A list of notifications. A notification entry will define its type (explained below) and the notification subject upon which the information should be published. Unlike the <i>destinationSubjects</i> described above, which are subjects for inter-EPN communication, these notification subjects are the mechanism for distribution information out of the EPN capability, for presentation to end-users through various means.

Notify Types

The *notify types* field defines what type of notifications should be emitted from a node when processing an event. The notifications are the mechanism used by potentially interested applications to observe what information each node is processing, and the results they produce.

The possible values for this field are:

Field	Description
Processed	This type indicates that a notification should be created when an event is considered suitable for processing by the node. An event is suitable either if no predicate is defined, or if the predicate indicates the event is valid.
Results	This type indicates that a notification should be created for any information produced as the result of the event processor processing the event.



Tip

Notifications are the mechanism for making information processed by the Event Processor Network accessible by interested parties. If a notify type(s) is not defined for a node, then it will only be used for internal processing, potentially supplying the processed event to other nodes in the network (or other networks if destination subject(s) are specified).

5.1.2. Registering the Network

5.1.2.1. JEE Container

The Event Processor Network is deployed within the JEE container as a WAR file with the following structure:

```
warfile
|
| -META-INF
|   | - beans.xml
|
| -WEB-INF
|   | -classes
|   |   | -epn.json
|   |   | -<custom classes/resources>
|   |
|   | -lib
|       | -epn-loader-jee.jar
```

```
| | -<additional libraries>
```

The `e pn.json` file contains the JSON representation of the EPN configuration.

The `e pn-loader-jee.jar` acts as a bootstrapper to load and register the Event Processor Network.

If custom predicates and/or event processors are defined, then the associated classes and resources can be defined in the `WEB-INF/classes` folder or within additional libraries located in the `WEB-INF/lib` folder.

A maven `pom.xml` that will create this structure is:

```
<project xmlns="http://maven.apache.org/POM/4.0.0" xmlns:xsi="http://
www.w3.org/2001/XMLSchema-instance"
    xsi:schemaLocation="http://maven.apache.org/POM/4.0.0 http://
maven.apache.org/maven-v4_0_0.xsd">
    <modelVersion>4.0.0</modelVersion>
    <groupId>...</groupId>
    <artifactId>...</artifactId>
    <version>...</version>
    <packaging>war</packaging>
    <name>...</name>

    <properties>
        <rtgov.version>...</rtgov.version>
    </properties>

    <dependencies>
        <dependency>
            <groupId>org.overlord.rtgov.event-processor-network</groupId>
            <artifactId>epn-core</artifactId>
            <version>${rtgov.version}</version>
            <scope>provided</scope>
        </dependency>
        <dependency>
            <groupId>org.overlord.rtgov.event-processor-network</groupId>
            <artifactId>epn-loader-jee</artifactId>
            <version>${rtgov.version}</version>
        </dependency>
        ....
    </dependencies>

</project>
```

If deploying in JBoss Application Server, then the following fragment also needs to be included, to define the dependency on the core Overlord Runtime Governance modules:

```
.....
```

```
<build>
  <finalName>slamonitor-epn</finalName>
  <resources>
    <resource>
      <directory>src/main/resources</directory>
      <filtering>true</filtering>
    </resource>
  </resources>
  <plugins>
    <plugin>
      <artifactId>maven-war-plugin</artifactId>
      <configuration>
        <failOnMissingWebXml>>false</failOnMissingWebXml>
        <archive>
          <manifestEntries>
            <Dependencies>deployment.overlord-rtgov.war</Dependencies>
          </manifestEntries>
        </archive>
      </configuration>
    </plugin>
  </plugins>
</build>
.....
```

5.1.2.2. OSGi Container

The Event Processor Network is deployed within the OSGi container as a JAR file with the following structure:

```
jarfile
|
| -META-INF
|   | - MANIFEST.MF
|
| -epn.json
| -epn-loader-osgi.jar
| -<custom classes/resources>
| -<additional libraries>
```

The `MANIFEST.MF` file is important, as it contains the OSGi metadata required for the container to understand the contents and imported packages.

The `epn.json` file contains the JSON representation of the EPN configuration.

The `epn-loader-osgi.jar` acts as a bootstrapper to load and register the Event Processor Network.

If custom predicates and/or event processors are defined, then the associated classes, resources and additional libraries can be located in the top level folder.

A maven pom.xml that will create this structure is:

```
<project xmlns="http://maven.apache.org/POM/4.0.0" xmlns:xsi="http://
www.w3.org/2001/XMLSchema-instance"
    xsi:schemaLocation="http://maven.apache.org/POM/4.0.0 http://
maven.apache.org/maven-v4_0_0.xsd">
    <modelVersion>4.0.0</modelVersion>
    <groupId>...</groupId>
    <artifactId>...</artifactId>
    <version>...</version>
    <packaging>war</packaging>
    <name>...</name>

    <properties>
        <rtgov.version>...</rtgov.version>
    </properties>

    <dependencies>
        <dependency>
            <groupId>org.overlord.rtgov.event-processor-network</groupId>
            <artifactId>epn-core</artifactId>
            <version>${rtgov.version}</version>
            <scope>provided</scope>
        </dependency>
        <dependency>
            <groupId>org.overlord.rtgov.event-processor-network</groupId>
            <artifactId>epn-loader-osgi</artifactId>
            <version>${rtgov.version}</version>
        </dependency>
        ....
    </dependencies>

    <build>
        <finalName>...</finalName>
        <resources>
            <resource>
                <directory>src/main/resources</directory>
                <filtering>true</filtering>
            </resource>
        </resources>
        <plugins>
            <plugin>
                <groupId>org.apache.felix</groupId>
                <artifactId>maven-bundle-plugin</artifactId>
                <extensions>true</extensions>
                <configuration>
                    <instructions>
                        <Bundle-SymbolicName>${project.artifactId}</Bundle-SymbolicName>
                        <Bundle-Version>${project.version}</Bundle-Version>
```

```
<Bundle-Activator>org.overlord.rtgov.epn.loader.osgi.EPNActivator</
Bundle-Activator>
  <Import-Package>
    !javax.inject.*,!javax.enterprise.*,!javax.persistence.*,
    *
  </Import-Package>
  <Embed-Dependency>*;scope=compile|runtime</Embed-Dependency>
</instructions>
</configuration>
</plugin>
</plugins>
</build>
</project>
```

5.1.3. Supporting Multiple Versions

Event Processor Networks define a version number that can be used to keep track of the evolution of changes in a network.

When a network is deployed to a container, and used to process events, a newer version of the network can be deployed along side the existing version to ensure there is continuity in the processing of the event stream. New events presented to the network will be processed by the most recent version, while events still being processed by a particular version of the network, will continue to be processed by the same version - thus ensuring that changes to the internal structure of the network do not impact events that are mid-way through being processed by the network.

The management features, discussed later in the User Guide, can be used to determine when an older version of the network last processed an event - and therefore when an older version has been inactive for a suitable amount of time, it can be unregistered.

5.2. Event Processors

As previously mentioned, all EventProcessor implementations can define the following information:

Field	Description
services	The optional map of names to services. The current service types are listed at the bottom of this section.
parameters	The optional map of names to parameters. These parameters can be used to customize the behaviour of an event processor.

Although custom event processors can be defined, there are some "out of the box" implementations. These are discussed in the following sub-sections.

5.2.1. Drools Event Processor

The Drools Event Processor implementation (`org.overlord.rtgov.ep.drools.DroolsEventProcessor`) enables events to be processed by a Complex Event Processing (CEP) rule. This implementation defines the following additional fields:

Field	Description
ruleName	The name of the rule, used to locate the rule definition in a file called "<ruleName>.drl".

An example of such a rule is:

```
import org.overlord.rtgov.activity.model.soa.RequestReceived
import org.overlord.rtgov.activity.model.soa.ResponseSent

global org.overlord.rtgov.ep.EPContext epc

declare RequestReceived
    @role( event )
    @timestamp( timestamp )
    @expires( 2m20s )
end

declare ResponseSent
    @role( event )
    @timestamp( timestamp )
    @expires( 2m20s )
end

rule "correlate request and response"
when
    $req : RequestReceived( $id : messageId ) from entry-point "Purchasing"
    $resp : ResponseSent( replyToId == $id, this after[0,2m20s] $req ) from
    entry-point "Purchasing"
then

    epc.logInfo("REQUEST: "+$req+" RESPONSE: "+$resp);

    java.util.Properties props=new java.util.Properties();
    props.put("requestId", $req.getMessageId());
    props.put("responseId", $resp.getMessageId());

    long responseTime=$resp.getTimestamp()-$req.getTimestamp();

    epc.logDebug("CORRELATION on id '"+$id+"' response time "+responseTime);

    props.put("responseTime", responseTime);
```

```
epc.handle(props);  
  
end
```

This is an example of a rule used to correlate request and response events. When a correlation is found, then a `ResponseTime` object is created and "forwarded" to the Event Processor Network for further processing using the *handle* method.

The source of the events into the rule are named entry points, where the name relates to the source node or subject that supplies the events.

The rule has access to external capabilities through the *EPContext*, which is defined in the statements:

```
global org.overlord.rtgov.ep.EPContext epc
```

This component is used at the end of the above example to handle the result of the event processing (i.e. to forward a derived event back into the network).

The rule can also access parameters using the `getParameter(name)` method on the context. See the javadoc for the `org.overlord.rtgov.ep.EPContext` interface for more information.

If an error occurs, that requires the event to be retried (within the Event Processor Network), or the business transaction blocked (when used as a synchronous policy), then the rule can either throw an exception or return the exception as the result using the *handle()* method.



Caution

Temporal rules do not currently work in a clustered environment. This is because correlation between events occurs in working memory, which is not shared across servers. Therefore for the correlation to work, all relevant events must be received by a single server.

5.2.2. JPA Event Processor

A JPA based Event Processor implementation (`org.overlord.rtgov.ep.jpa.JPAEventProcessor`) enables events to be persisted. This implementation defines the following additional fields:

Field	Description
<code>entityManager</code>	The name of the entity manager to be used.

5.2.3. Mail Event Processor

A mail based Event Processor implementation (`org.overlord.rtgov.ep.mail.MailEventProcessor`) enables events to be transformed and sent as an email. This implementation defines the following additional fields:

Field	Description
from	The <i>from</i> email address.
to	The list of <i>to</i> email addresses.
subjectScript	The location of the MVEL script, which may be relative to the classpath, used to define the email subject.
contentScript	The location of the MVEL script, which may be relative to the classpath, used to define the email content.
contentType	The optional type of the email content. By default it will be "text/plain".
jndiName	The optional JNDI name locating the JavaMail session.

5.2.4. MVEL Event Processor

A MVEL based Event Processor implementation (`org.overlord.rtgov.ep.mvel.MVELEventProcessor`) enables events to be processed by a MVEL script. This implementation defines the following additional fields:

Field	Description
script	The location of the MVEL script, which may be relative to the classpath.

The script will have access to the following variables:

Variable	Description
source	The name of the source node or subject upon which the event was received.
event	The event to be processed.
retriesLeft	The number of retries remaining.
epc	The EP context (<code>org.overlord.rtgov.ep.EPContext</code>), providing some utility functions for use by the script, including the <i>handle</i> method for pushing the result back into the network, <i>getParameter</i> method for obtaining custom properties, and various logging methods.

If an error occurs, that requires the event to be retried (within the Event Processor Network), or the business transaction blocked (when used as a synchronous policy), then the script can return the exception as the result using the *handle()* method.

5.2.5. Supporting Services

This section describes a set of supporting services available to some of the Event Processor implementations. See the documentation for the specific Event Processor implementations for information on how to access these services.

5.2.5.1. Cache Manager

Description

The purpose of the Cache Manager service is to enable event processors to store and retrieve information in named caches.

API

Method	Description
<code><K,V> Map<K,V> getCache(String name)</code>	This method returns the cache associated with the supplied name. If the cache does not exist, then a null will be returned.
<code>boolean lock(String cacheName, Object key)</code>	This method locks the item, associated with the supplied key, in the named cache.

Implementations

Infinispan

Class name: `org.overlord.rtgov.common.infinispan.service.InfinispanCacheManager`

This class provides an implementation based on Infinispan. The properties for this class are:

Property	Description
<code>container</code>	The optional JNDI name for the infinspan container defined in the <code>standalone-full.xml</code> or <code>standalone-full-ha.xml</code> file.

The container will be obtained in three possible ways.

- (a) if the container is explicitly defined, then it will be used
- (b) if the container is not defined, then a default container will be obtained from the `$JBOSS_HOME/standalone/configuration/overlord-rtgov.properties` file for the `infinispan.container` property.
- (c) if no default container is defined, then a default cache manager will be created.

5.3. Predicates

Although custom predicates can be defined, there are some "out of the box" implementations:

5.3.1. MVEL Predicate

A MVEL based Predicate implementation (`org.overlord.rtgov.ep.mvel.MVELPredicate`) enables events to be evaluated by a MVEL expression or script. This implementation defines the following additional fields:

Field	Description
expression	The MVEL expression used to evaluate the event.
script	The location of the MVEL script, which may be relative to the classpath.



Caution

Only the expression or script should be defined, not both.

The expression or script will have access to the following variables:

Variable	Description
event	The event to be processed.

Chapter 6. Accessing Derived Information

6.1. Configuring Active Collections

An Active Collection is similar to a standard collection, but with the ability to report change notifications when items are inserted, updated or removed. The other main difference is that they cannot be directly updated - their contents is managed by an Active Collection Source which acts as an adapter between the collection and the originating source of the information.

This section will explain how to define an Active Collection Source and register it to indirectly create an Active Collection.

6.1.1. Defining the Source

The source can be defined as an object model or specified as a JSON representation for packaging in a suitable form, and subsequently de-serialized when deployed to the runtime governance server.

The following is an example of the JSON representation that defines a list of Active Collection Sources - so more than one source can be specified with a single configuration:

```
[
  {
    "@class" :
    "org.overlord.rtgov.active.collection.epn.EPNActiveCollectionSource",
    "name" : "ServiceResponseTimes",
    "type" : "List",
    "itemExpiration" : 0,
    "maxItems" : 100,
    "subject" : "ServiceResponseTimes",
    "aggregationDuration" : 1000,
    "groupBy" : "serviceType + \":\" + operation + \":\" + fault",
    "aggregationScript" : "AggregateServiceResponseTime.mvel"
  }, {
    "@class" :
    "org.overlord.rtgov.active.collection.epn.EPNActiveCollectionSource",
    "name" : "ServiceDefinitions",
    "type" : "Map",
    "itemExpiration" : 0,
    "maxItems" : 100,
    "subject" : "ServiceDefinitions",
    "scheduledScript" : "TidyServiceDefinitions.mvel",
    "scheduledInterval" : 60000,
    "properties" : {
      "maxSnapshots" : 5
    }
  }
]
```

```
    },
    "maintenanceScript" : "MaintainServiceDefinitions.mvel"
  }, {
    "@class" :
    "org.overlord.rtgov.active.collection.epn.EPNActiveCollectionSource",
    "name" : "Situations",
    "type" : "List",
    "itemExpiration" : 40000,
    "maxItems" : 0,
    "subject" : "Situations",
    "activeChangeListeners" : [ {
      "@class" : "org.overlord.rtgov.active.collection.jmx.JMXNotifier",
      "objectName" : "overlord.rtgov.services:name=Situations",
      "descriptionScript" : "SituationDescription.mvel",
      "insertTypeScript" : "SituationType.mvel"
    } ],
    "derived": [ {
      "name": "FilteredSituations",
      "predicate": {
        "type": "MVEL",
        "expression": "map = context.getMap(\"IgnoredSituationSubjects\"); if
        (map == null) { return false; } return !map.containsKey(subject);"
      },
      "properties" : {
        "active" : false
      }
    } ]
  }, {
    "@class" :
    "org.overlord.rtgov.active.collection.ActiveCollectionSource",
    "name" : "IgnoredSituationSubjects",
    "type" : "Map",
    "lazy" : true,
    "factory" : {
      "@class" :
      "org.overlord.rtgov.active.collection.infinispan.InfinispanActiveCollectionFactory",
      "cache" : "IgnoredSituationSubjects"
    }
  }, {
    "@class" :
    "org.overlord.rtgov.active.collection.ActiveCollectionSource",
    "name" : "Principals",
    "type" : "Map",
    "lazy" : true,
    "visibility" : "Private",
    "factory" : {
      "@class" :
      "org.overlord.rtgov.active.collection.infinispan.InfinispanActiveCollectionFactory",
      "cache" : "Principals"
    }
  }
}
```

```

    }
  }
}

```

This configuration shows the definition of multiple Active Collection Sources. The top level elements for a source, that are common to all active collection sources, are:

Field	Description
@class	This attribute defines the Java class implementing the Active Collection Source. This class must be directly or indirectly derived from <code>org.overlord.rtgov.active.collection.ActiveCollectionSource</code> .
name	The name of the Active Collection that will be created and associated with this source.
type	The type of active collection. The currently supported values (as defined in the <code>org.overlord.rtgov.active.collection.ActiveCollectionType</code> enum are: List (default) Map
visibility	The visibility of active collection, i.e. whether accessible via the remote access mechanisms such as REST. The currently supported values (as defined in the <code>org.overlord.rtgov.active.collection.ActiveCollectionVisibility</code> enum are: Public (default) Private
lazy	Whether active collection should be created on startup, or lazily instantiated upon first use. The default is false.
itemExpiration	If not zero, then defines the number of milliseconds until an item in the collection should expire (i.e. be removed).
maxItems	If not zero, defines the maximum number of items that the collection should hold. If an insertion causes the size of the collection to increase above this value, then the oldest item should be removed.

Field	Description
aggregationDuration	The duration (in milliseconds) over which the information will be aggregated.
groupBy	An expression defining the key to be used to categorize the information being aggregated. The expression can use properties associated with the information being aggregated.
aggregationScript	The MVEL script to be used to aggregate the information. An example will be shown in a following sub-section.
scheduledInterval	The interval (in milliseconds) between the invocation of the scheduled script.
scheduledScript	The MVEL script invoked at a fixed interval to perform routine tasks on the collection.
maintenanceScript	By default, events received by the active collection source will be inserted into the associated active collection. If a MVEL maintenance script is specified, then it will be invoked to manage the way in which the received information will be applied to the active collection.
properties	A set of properties that can be access by the various scripts.
derived	An optional list of definitions for derived collections that will be created with the top level active collection, and retained regardless of whether any users are currently accessing them. (Normally when a derived collection is created dynamically on demand, once it has served its purpose, it will be cleaned up). The definition will be explained below.
activeChangeListeners	The list of active change listeners that should be instantiated and automatically registered with the Active Collection. The listeners must be derived from the Java class <code>org.overlord.rtgov.active.collection.AbstractActiveChar</code>
factory	The optional factory for creating the active collection, derived from the class <code>org.overlord.rtgov.active.collection.ActiveCollectionFa</code>

The additional attributes associated with the `EPNActiveCollectionSource` implementation will be discussed in a later section.

6.1.1.1. Scripts

Aggregation

The aggregation script is used to (as the name suggests) aggregate information being provided by the source, before being applied to the collection. The values available to the MVEL script are:

Variable	Description
events	The list of events to be aggregated.

The aggregated result will be returned from the script.

Scheduled

The scheduled script is used to perform regular tasks on the active collection, independent of any information being applied to the collection. The values available to the MVEL script are:

Variable	Description
acs	The active collection source.
acs.properties	The properties configured for the active collection source.
variables	A map associated with the active collection source that can be used by the scripts to cache information.

Maintenance

The maintenance script is used to manage how new information presented to the source is applied to the active collection. If no script is defined, then the information will be inserted by default. The values available to the MVEL script are:

Variable	Description
acs	The active collection source.
acs.properties	The properties configured for the active collection source.
key	The key for the information being inserted. May be null.
value	The value for the information being inserted.
variables	A map associated with the active collection source that can be used by the scripts to cache information.

An example script, showing how these variables can be used is:

```
int maxSnapshots=acs.properties.get("maxSnapshots");

snapshots = variables.get("snapshots");

if (snapshots == null) {
    snapshots = new java.util.ArrayList();
    variables.put("snapshots", snapshots);
}

// Update the current snapshot
currentSnapshot = variables.get("currentSnapshot");

if (currentSnapshot == null) {
    currentSnapshot = new java.util.HashMap();
}

snapshots.add(new java.util.HashMap(currentSnapshot));

currentSnapshot.clear();

// Remove any snapshots above the number configured
while (snapshots.size() > maxSnapshots) {
    snapshot = snapshots.remove(0);
}

// Merge snapshots
merged =
    org.overlord.rtgov.analytics.util.ServiceDefinitionUtil.mergeSnapshots(snapshots);

// Update existing, and remove definitions no longer relevant
foreach (entry : acs.activeCollection) {
    org.overlord.rtgov.analytics.service.ServiceDefinition sd=null;

    if (merged.containsKey(entry.key)) {
        acs.update(entry.key, merged.get(entry.key));
    } else {
        acs.remove(entry.key, entry.value);
    }

    merged.remove(entry.key);
}

// Add new definitions
for (key : merged.keySet()) {
    acs.insert(key, merged.get(key));
}
```

This example shows the script accessing the Active Collection Source and its properties, as well as accessing (and updating) the *variables* cache associated with the source.

6.1.1.2. Derived Active Collections

The *derived* element defines a list of derived active collection definitions that will be instantiated with the active collection.

The fields associated with this component are:

Field	Description
name	The derived active collection's name.
predicate	The predicate that will determine what subset of entries from the parent collection should be available within the derived collection.
properties	Properties that will be passed to the derived active collection.

The following properties can be defined:

Property	Description
active	This optional property indicates whether the derived collection should be actively maintained (i.e. active = true), which is the default, or whether the contents should be determined when a query is performed. The main reason for setting this property to false is due to the predicate being based on volatile information, and therefore the contents needs to be evaluated at the time it is requested.

6.1.1.3. Active Change Listeners

The *activeChangeListeners* element defines a list of Active Change Listener implementations that will be instantiated and registered with the active collection.

The fields associated with this component are:

Field	Description
@class	The Java class that provides the listener implementation and is directly or indirectly derived from <code>org.overlord.rtgov.active.collection.AbstractActiveChar</code>

The remaining attributes in the example above will be discussed in a subsequent section related to reporting results via JMX notifications.

6.1.1.4. Factory

The *factory* element defines an Active Collection Factory implementation that will be used to create the active collection.

The fields associated with this component are:

Field	Description
@class	The Java class that provides the factory implementation and is directly or indirectly derived from <code>org.overlord.rtgov.active.collection.ActiveCollectionFactory</code>

The current list of factory implementations are defined below.

Infinispan

The `org.overlord.rtgov.active.collection.infinispan.InfinispanActiveCollectionFactory` component are:

Field	Description
cache	The name of the cache to be presented as an Active Map.
container	The optional JNDI name used to obtain the cache container. If not defined, then the default container will be obtained from the <i>infinispan.container</i> property from <code>overlord-rtgov.properties</code> file in the <code>\$JBOSS_HOME/standalone/configuration</code> folder. If the default container is not defined, then a default cache manager will be instantiated.

6.1.2. Registering the Source

6.1.2.1. JEE Container

The Active Collection Source is deployed within the JEE container as a WAR file with the following structure:

```
warfile
```



```

|
| -META-INF
|   | - beans.xml
|
| -WEB-INF
|   | -classes
|   |   | -acs.json
|   |   | -<custom classes/resources>
|   |
|   | -lib
|   |   | -acs-loader-jee.jar
|   |   | -<additional libraries>

```

The `acs.json` file contains the JSON representation of the Active Collection Source configuration.

The `acs-loader-jee.jar` acts as a bootstrapper to load and register the Active Collection Source.

If custom active collection source and/or active change listeners are defined, then the associated classes and resources can be defined in the `WEB-INF/classes` folder or within additional libraries located in the `WEB-INF/lib` folder.

A maven `pom.xml` that will create this structure is:

```

<project xmlns="http://maven.apache.org/POM/4.0.0" xmlns:xsi="http://
www.w3.org/2001/XMLSchema-instance"
    xsi:schemaLocation="http://maven.apache.org/POM/4.0.0 http://
maven.apache.org/maven-v4_0_0.xsd">
    <modelVersion>4.0.0</modelVersion>
    <groupId>...</groupId>
    <artifactId>...</artifactId>
    <version>...</version>
    <packaging>war</packaging>
    <name>...</name>

    <properties>
        <rtgov.version>...</rtgov.version>
    </properties>

    <dependencies>
        <dependency>
            <groupId>org.overlord.rtgov.active-queries</groupId>
            <artifactId>active-collection</artifactId>
            <version>${rtgov.version}</version>
            <scope>provided</scope>
        </dependency>
        <dependency>
            <groupId>org.overlord.rtgov.active-queries</groupId>
            <artifactId>acs-loader-jee</artifactId>

```

```
<version>${rtgov.version}</version>
</dependency>
....
</dependencies>

</project>
```

If deploying in JBoss Application Server, then the following fragment also needs to be included, to define the dependency on the core Overlord rtgov modules:

```
.....
<build>
  <finalName>....</finalName>
  <plugins>
    <plugin>
      <artifactId>maven-war-plugin</artifactId>
      <configuration>
        <failOnMissingWebXml>>false</failOnMissingWebXml>
        <archive>
          <manifestEntries>
            <Dependencies>deployment.overlord-rtgov.war</Dependencies>
          </manifestEntries>
        </archive>
      </configuration>
    </plugin>
  </plugins>
</build>
.....
```

6.1.2.2. OSGi Container

The Active Collection Source is deployed within the OSGi container as a JAR file with the following structure:

```
jarfile
|
| -META-INF
|   | - beans.xml
|
| -acs.json
| -acs-loader-osgi.jar
| -<custom classes/resources>
| -<additional libraries>
```

The `acs.json` file contains the JSON representation of the Active Collection Source configuration.

The `acs-loader-osgi.jar` acts as a bootstrapper to load and register the Active Collection Source.

If custom active collection source and/or active change listeners are defined, then the associated classes, resources and additional libraries can be located in the top level folder.

A maven pom.xml that will create this structure is:

```
<project xmlns="http://maven.apache.org/POM/4.0.0" xmlns:xsi="http://
www.w3.org/2001/XMLSchema-instance"
    xsi:schemaLocation="http://maven.apache.org/POM/4.0.0 http://
maven.apache.org/maven-v4_0_0.xsd">
    <modelVersion>4.0.0</modelVersion>
    <groupId>...</groupId>
    <artifactId>...</artifactId>
    <version>...</version>
    <packaging>war</packaging>
    <name>...</name>

    <properties>
        <rtgov.version>...</rtgov.version>
    </properties>

    <dependencies>
        <dependency>
            <groupId>org.overlord.rtgov.active-queries</groupId>
            <artifactId>active-collection</artifactId>
            <version>${rtgov.version}</version>
            <scope>provided</scope>
        </dependency>
        <dependency>
            <groupId>org.overlord.rtgov.active-queries</groupId>
            <artifactId>acs-loader-osgi</artifactId>
            <version>${rtgov.version}</version>
        </dependency>
        ....
    </dependencies>

    <build>
        <finalName>...</finalName>
        <resources>
            <resource>
                <directory>src/main/resources</directory>
                <filtering>true</filtering>
            </resource>
        </resources>
        <plugins>
            <plugin>
                <groupId>org.apache.felix</groupId>
                <artifactId>maven-bundle-plugin</artifactId>
                <extensions>true</extensions>
                <configuration>
```

```
<instructions>
  <Bundle-SymbolicName>${project.artifactId}</Bundle-SymbolicName>
  <Bundle-Version>${project.version}</Bundle-Version>
  <Bundle-Activator>org.overlord.rtgov.acs.loader.osgi.ACSActivator</
Bundle-Activator>
  <Import-Package>
    !javax.inject.*,!javax.enterprise.*,!javax.persistence.*,
    . . . . ,
    *
  </Import-Package>
  <Embed-Dependency>*;scope=compile|runtime</Embed-Dependency>
</instructions>
</configuration>
</plugin>
</plugins>
</build>

</project>
```

6.2. Presenting Results from an Event Processor Network

As discussed in the preceding section, an Active Collection Source can be configured to obtain information from an Event Processor Network, which is then placed in the associated Active Collection. This section will explain in more detail how this can be done using the specific Active Collection Source implementation.

```
[
  {
    "@class" :
    "org.overlord.rtgov.active.collection.epn.EPNActiveCollectionSource",
    "name" : "Situations",
    "type" : "List",
    "itemExpiration" : 40000,
    "maxItems" : 0,
    "subject" : "Situations",
    "activeChangeListeners" : [ {
      "@class" : "org.overlord.rtgov.active.collection.jmx.JMXNotifier",
      "objectName" : "overlord.rtgov.services:name=Situations",
      "descriptionScript" : "SituationDescription.mvel",
      "insertTypeScript" : "SituationType.mvel"
    } ],
    "derived": [ {
      "name": "FilteredSituations",
      "predicate": {
        "type": "MVEL",
        "expression": "map = context.getMap(\"IgnoredSituationSubjects
\"); if (map == null) { return false; } return !map.containsKey(subject);"
```

```

    },
    "properties" : {
        "active" : false
    }
} ]
}
]

```

This configuration shows an example of an Active Collection Source using the `org.overlord.rtgov.active.collection.epn.EPNActiveCollectionSource` implementation. The additional fields associated with this implementation are:

Field	Description
subject	The EPN subject upon which the information has been published.

An example Event Processor Network configuration that will publish information on the subject (e.g. *Situations*) specified in the Active Collection Source configuration above is:

```

{
  "name" : "SLAMonitorEPN",
  "version" : "${project.version}",
  "subscriptions" : [ {
    "nodeName" : "SLAViolations",
    "subject" : "ServiceResponseTimes"
  } ],
  "nodes" : [
    {
      "name" : "SLAViolations",
      "sourceNodes" : [ ],
      "destinationSubjects" : [ "Situations" ],
      "maxRetries" : 3,
      "retryInterval" : 0,
      "eventProcessor" : {
        "@class" : "org.overlord.rtgov.ep.drools.DroolsEventProcessor",
        "ruleName" : "SLAViolation",
        "parameters" : {
          "levels" : [
            {
              "threshold" : 400,
              "severity" : "Critical"
            },
            {
              "threshold" : 320,
              "severity" : "High"
            },
            {
              "threshold" : 260,
              "severity" : "Medium"
            }
          ]
        }
      }
    }
  ]
}

```

```

        },
        {
            "threshold" : 200,
            "severity" : "Low"
        }
    ]
}
},
"predicate" : null,
"notifications" : [ {
    "type" : "Processed",
    "subject" : "SituationsProcessed"
}, {
    "type" : "Results",
    "subject" : "Situations"
} ]
}
]
}

```

6.3. Publishing Active Collection Contents as JMX Notifications

```

[
    .....
    {
        .....
        "activeChangeListeners" : [ {
            "@class" : "org.overlord.rtgov.active.collection.jmx.JMXNotifier",
            "objectName" : "overlord.sample.slamonitor:name=SLAViolations",
            "insertType" : "SLAViolation"
        } ],
        .....
    }
]

```

This configuration shows the use of the JMXNotifier active change listener implementation. This implementation has the following additional fields:

Field	Description
objectName	The MBean (JMX) object name to be used to report the notification.
descriptionScript	The MVEL script that can be used to derive the <i>description</i> field on the notification. If not defined, then the information's <i>toString()</i> value will be used.

Field	Description
insertType	The <i>type</i> field for the notification when performing an insert.
insertTypeScript	An optional MVEL script that can be used to derive the <i>type</i> field for an insert.
updateType	The optional <i>type</i> field for the notification when performing an update.
updateTypeScript	An optional MVEL script that can be used to derive the <i>type</i> field for an update.
removeType	The optional <i>type</i> field for the notification when performing a removal.
removeTypeScript	An optional MVEL script that can be used to derive the <i>type</i> field for a remove.

The following JConsole snapshot shows this JMXNotifier in action, reporting SLA violations from the associated active collection:

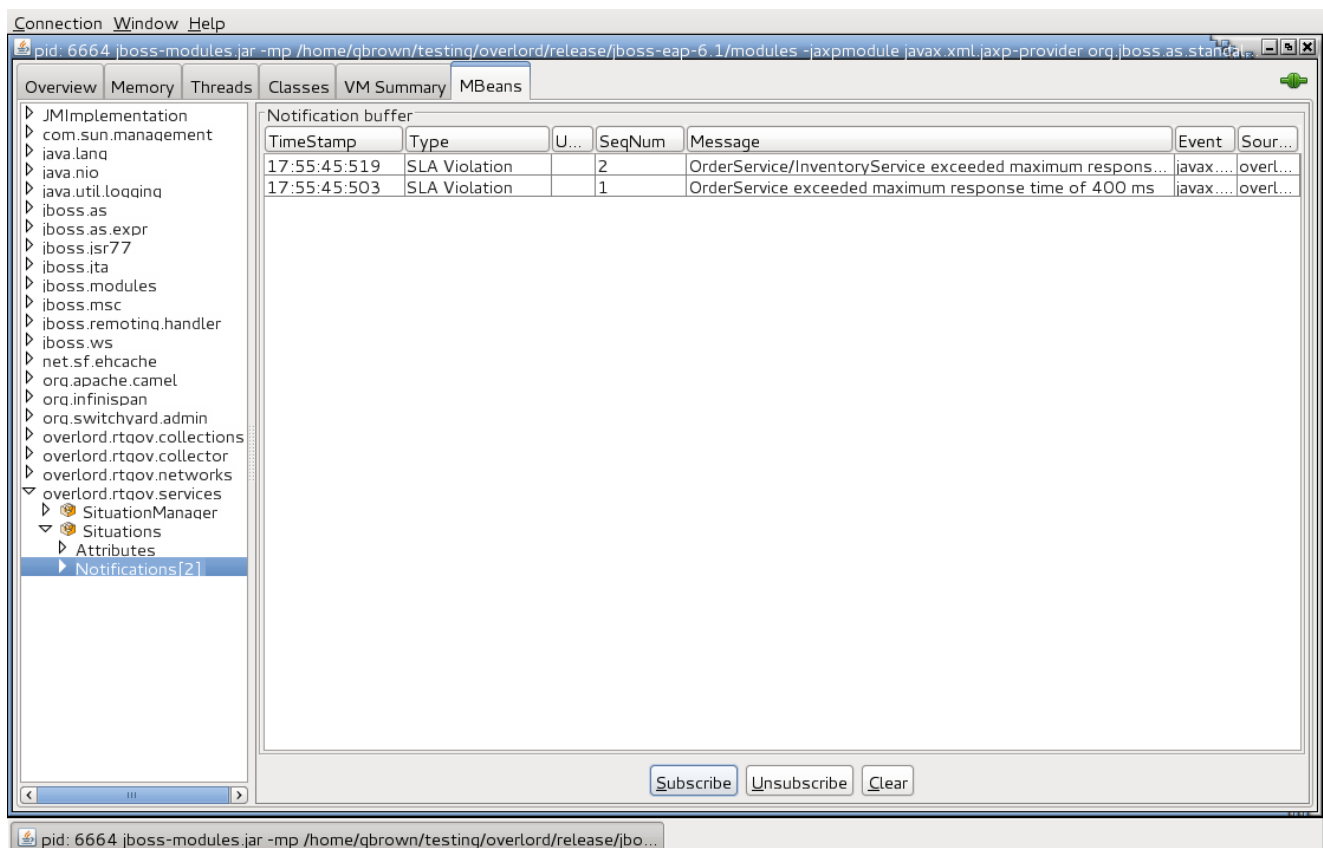


Figure 6.1.

6.4. Querying Active Collections via REST

The Active Collections configured within the runtime governance server can be accessed via a REST service, by POSTing the JSON representation of a query specification to the URL: `<host>/overlord-rtgov/acm/query`

This service used basic authentication, with a default username `admin` and password `overlord`.

The Query Specification (see `org.overlord.rtgov.active.collection.QuerySpec` in the API documentation) is comprised of the following information:

Attribute	Description
collection	The active collection name.
predicate	Optional. If defined with the parent name, then can be used to derive a child collection that filters its parent's content (and notifications) based on the predicate.
parent	Optional. If deriving a child collection, this field defines the parent active collection from which it will be derived.
maxItems	Defines the maximum number of items that should be returned in the result, or 0 if unrestricted.
truncate	If a maximum number of items is specified, then this field can be used to indicate whether the Start or End of the collection should be truncated.
style	Allows control over how the results are returned. The value Normal means as it appears in the collection. The value Reversed means the order of the contents should be reversed.
properties	Map of key/value pairs, used when creating a derived collection. Currently the only relevant property is a boolean called <i>active</i> , defaults to true, which can be used to force queries on the derived collection to be evaluated when information requested, in situations where the predicate is based on volatile information.

The collection field defines the name of the collection - either an existing collection name, or if defining the *predicate* and *parent* fields, then this field defines the name of the derived collection to be created.

The predicate field refers to a component that implements a predicate interface - the implementation is defined based on the *type* field. Currently only a MVEL based implementation exists, with a single field *expression* defining the predicate as a string.

For example,

```
{
  "parent" : "ServiceResponseTimes",
  "maxItems" : 5000,
  "collection" : "OrderServiceSRT",
  "predicate" : {
    "type" : "MVEL",
    "expression" : "serviceType == \"{urn:switchyard-quickstart-
demo:orders:0.1.0}OrderService\" && operation == \"submitOrder\""
  },
  "truncate" : "End",
  "style" : "Reversed"
}
```

If the Active Collection Manager (ACM) does not have a collection named *OrderServiceSRT*, then it will use the supplied defaults to create the derived collection. If the collection already exists, then the contents will simply be returned, allowing multiple users to share the same collection.

The list of objects returned by the query will be represented in JSON.

6.5. Pre-Defined Active Collections

This section describes the list of Active Collections that are provided "out of the box".

6.5.1. ServiceResponseTimes

This active collection is a list of `org.overlord.rtgov.analytics.service.ResponseTime` objects.

The response times represent an aggregation of the metrics for a particular service, operation and response/fault, over a configured period. For more details please see the API documentation.

6.5.2. Situations

This active collection is a list of `org.overlord.rtgov.analytics.situation.Situation` objects.

The Situation object represents a *situation of interest* that has been detected within the Event Processor Network, and needs to be highlighted to end users. For more information on this class, please see the API documentation.

This active collection configuration also publishes its contents via a JMX notifier, based on the following configuration details:

```
[
  {
    .....
  }, {
    "@class" :
    "org.overlord.rtgov.active.collection.epn.EPNActiveCollectionSource",
    "name" : "Situations",
    "type" : "List",
    "itemExpiration" : 40000,
    "maxItems" : 0,
    "subject" : "Situations",
    "activeChangeListeners" : [ {
      "@class" : "org.overlord.rtgov.active.collection.jmx.JMXNotifier",
      "objectName" : "overlord.rtgov:name=Situations",
      "descriptionScript" : "SituationDescription.mvel",
      "insertTypeScript" : "SituationType.mvel"
    } ],
    .....
  }
]
```

6.5.3. ServiceDefinitions

This active collection is a map of Service Type name to `org.overlord.rtgov.analytics.service.ServiceDefinition` objects. More details on this class can be found in the API documentation.

An example of a service definition, represented in JSON is:

```
{
  "serviceType": "{http://www.jboss.org/examples}OrderService",
  "operations": [{
    "name": "buy",
    "metrics": {
      "count": 30,
      "average": 1666,
      "min": 500,
      "max": 2500
    },
    "requestResponse": {
      "metrics": {
        "count": 10,
        "average": 1000,
        "min": 500,
        "max": 1500
      },
      "invocations": [{
```

```

        "serviceType": "{http://www.jboss.org/
examples}CreditAgencyService",
        "metrics": {
            "count": 10,
            "average": 500,
            "min": 250,
            "max": 750
        },
        "operation": "checkCredit"
    }
}
},
"requestFaults": [ {
    "fault": "UnknownCustomer",
    "metrics": {
        "count": 20,
        "average": 2000,
        "min": 1500,
        "max": 2500
    }
}
]
},
"metrics": {
    "count": 30,
    "average": 1666,
    "min": 500,
    "max": 2500
}
}

```

The list of service definitions returned from this active collection, and the information they represent (e.g. consumed services), represents a near term view of the service activity based on the configuration details defined in the collection's active collection source. Therefore, if (for example) a service has not invoked one of its consumed services within the time period of interest, then its details will not show in the service definition.

This information is simply intended to show the service activity that has occurred in the recent history, as a means of monitoring the real-time situation to deal with emerging problems.

The duration over which the information is retained is determined by two properties in the ServiceDefinitions active collection source configuration - the "scheduledInterval" (in milliseconds) which dictates how often a snapshot of the current service definition information is stored, and the "maxSnapshots" property which defines the maximum number of snapshots that should be used. So the duration of information retained can be calculated as the *scheduled interval multiplied by the maximum number of snapshots*.

6.5.4. Principals

This active collection is a `map` of Principal name to a map of named properties. This information is used to convey details captured (or derived) regarding a *principal*. A principal can represent a user, group or organization.

Chapter 7. Available Services

This section describes the "out of the box" additional services that are provided.

7.1. Call Trace

The "Call Trace" service is used to return a tree structure tracing the path of a business transaction (as a call/invoke stack) through a Service Oriented Architecture.

The URL for the service's REST GET request is: `<host>/overlord-rtgov/call/trace/instance?type=<type>&value=<value>`

The service uses basic authentication, with a default username `admin` and password `overlord`.

This service has the following query parameters:

Parameter	Description
type	The type of the identify value, e.g. Conversation, Endpoint, Message or Link
value	The identifier value, e.g. if type is Conversation, then the value would be a globally unique identifier for the business transaction

The call trace is returned as a JSON representation of the call trace object model. The top level class is `org.overlord.rtgov.call.trace.model.CallTrace`, details can be found in the API documentation.

7.2. Report Server



Note

As of version 2.0, the report server is deprecated, indicating that it will be removed from the project in a future release. Therefore we suggest that you should not start using it, and if already using it, plan to migrate off this capability in the new future. The capability is being deprecated as more sophisticated analysis and reporting can be achieved through the Kibana/Elasticsearch tools, which are now integrated from RTGov 2.0.

The "Report Server" service is used to generate instances of a report whose definition has previously been deployed to the server. This section will explain how to configure and deploy a report definition, and then how to generate the report instances.

7.2.1. Creating and deploying a report definition

The first step is to specify a JSON representation of the `org.overlord.rtgov.reports.ReportDefinition` class (see API documentation for details).

```
[
  {
    "name" : "SLAReport",
    "generator" : {
      "@class" : "org.overlord.rtgov.reports.MVELReportGenerator",
      "scriptLocation" : "SLAReport.mvel"
    }
  }
]
```

The report definition only contains the `name` of the report, and the definition of the `generator`. In this case, the `org.overlord.rtgov.reports.MVELReportGenerator` implementation of the report generator has been used, which also includes a property to define the location of the report script (e.g. `SLAReport.mvel`). This MVEL SLA report script can be found in the `samples/sla/report` folder.

7.2.1.1. Registering the Report

JEE Container

The Report Definition is deployed within the JEE container as a WAR file with the following structure:

```
warfile
|
| -META-INF
|   | - beans.xml
|
| -WEB-INF
|   | -classes
|   |   | -reports.json
|   |   | -<custom classes/resources>
|   |
|   | -lib
|       | -reports-loader-jee.jar
|       | -<additional libraries>
```

As described above, the `reports.json` file contains the JSON representation of the report definition configuration.

The `reports-loader-jee.jar` acts as a bootstrapper to load and register the Report Definition.

If custom report generators or scripts are defined, then the associated classes and resources can be defined in the `WEB-INF/classes` folder or within additional libraries located in the `WEB-INF/lib` folder.

A maven `pom.xml` that will create this structure is:

```
<project xmlns="http://maven.apache.org/POM/4.0.0" xmlns:xsi="http://
www.w3.org/2001/XMLSchema-instance"
    xsi:schemaLocation="http://maven.apache.org/POM/4.0.0 http://
maven.apache.org/maven-v4_0_0.xsd">
    <modelVersion>4.0.0</modelVersion>
    <groupId>...</groupId>
    <artifactId>...</artifactId>
    <version>...</version>
    <packaging>war</packaging>
    <name>...</name>

    <properties>
        <rtgov.version>...</rtgov.version>
    </properties>

    <dependencies>
        <dependency>
            <groupId>org.overlord.rtgov.activity-analysis</groupId>
            <artifactId>reports-loader-jee</artifactId>
            <version>${project.version}</version>
        </dependency>
        <dependency>
            <groupId>org.overlord.rtgov.activity-analysis</groupId>
            <artifactId>reports</artifactId>
            <version>${project.version}</version>
            <scope>test</scope>
        </dependency>
        ....
    </dependencies>

</project>
```

If deploying in JBoss Application Server, then the following fragment also needs to be included, to define the dependency on the core Overlord Runtime Governance modules:

```
.....
<build>
    <finalName>slamonitor-eqn</finalName>
    <plugins>
        <plugin>
            <artifactId>maven-war-plugin</artifactId>
            <configuration>
                <failOnMissingWebXml>>false</failOnMissingWebXml>
```

```
<archive>
  <manifestEntries>
    <Dependencies>deployment.overlord-rtgov.war</Dependencies>
  </manifestEntries>
</archive>
</configuration>
</plugin>
</plugins>
</build>
.....
```

7.2.2. Generating an instance of the report

The URL for the service's REST GET request is: `<host>/overlord-rtgov/report/generate?<parameters>`

The service uses basic authentication, with a default username `admin` and password `overlord`.

This service has the following query parameters:

Parameter	Description
report	The name of the report to be generated. This must match the previously deployed report definition name.
startDay/Month/Year	The optional start date for the report. If not defined, then the report will use all activities stored up until the end date.
endDay/Month/Year	The optional end date for the report. If not defined, then the report will use all activities up until the current date.
timezone	The optional timezone.
calendar	The optional business calendar name. A default called exists called <i>Default</i> which represents a working week of Monday to Friday, 9am to 5pm, excluding Christmas Day.

All other query parameters that may be provided will be specific to the report definition being generated.

The operation returns a JSON representation of the `org.overlord.rtgov.reports.model.Report` class. See the API documentation for further details of the object model.

7.2.3. Providing a custom Business Calendar

A custom Business Calendar can be defined as a JSON representation of the `org.overlord.rtgov.reports.mode.Calendar` class (see API documentation for details). This should be stored in a file whose location is referenced using a property called "calendar.<CalendarName>" in the `overlord-rtgov.properties` file.

7.3. Service Dependency

The "Service Dependency" service is used to return a service dependency graph as a SVG image. The graph represents the invocation and usage links between services (and their operations), and provides a color-coded indication of areas that require attention. Where *situations* have been detected against services or their operations, this will be flagged on the service dependency graph with an appropriate colour reflecting their severity.

The URL for the service's REST GET request is: `<host>/overlord-rtgov/service/dependency/overview?width=<value>`

The service uses basic authentication, with a default username `admin` and password `overlord`.

This service has the following query parameters:

Parameter	Description
width	Represents the optional image width. If the width is below a certain threshold, then a summary version of the dependency graph will be provided without text or tooltips (used to display metrics).

7.3.1. How to customize the severity levels

The severity levels used for the graph nodes and links can be customized by creating a MVEL script. A default script is provided within the `overlord-rtgov.war`, which can be used as a template. The script is called `SeverityAnalyzer.mvel` and is located within the `/WEB-INF/classes` folder of the `overlord-rtgov.war` archive.

An example of the contents of this script is:

```
Severity severity=Severity.Normal;

if (summary != null && latest != null && summary.getAverage() > 0) {
    double change=latest.getAverage()/summary.getAverage();

    if (change > 0) {

        if (change > 3.0) {
            severity = Severity.Critical;
        }
    }
}
```

```
    } else if (change > 2.2) {
        severity = Severity.Serious;
    } else if (change > 1.8) {
        severity = Severity.Error;
    } else if (change > 1.4) {
        severity = Severity.Warning;
    } else if (change > 1.2) {
        severity = Severity.Minor;
    }
}
}

return (severity);
```

The script returns a value of type `org.overlord.rtgov.service.dependency.presentation.Severity`, which is automatically available as an imported class for use by the script.

The script takes four variables:

Variable	Description
summary	The summary metric to be evaluated.
history	The list of recent metrics, merged to produce the summary metric.
latest	The latest metric.
component	The service definition component associated with the metric. This variable is not used within the example script above.

If a customized script is created, then its location can be specified in the `MVELSeverityAnalyzer.scriptLocation` property in the `overlord-rtgov.properties` configuration file.

7.4. Situation Manager

The "Situation Manager" service is used to determine whether situations associated with a particular subject (i.e. service) should be displayed to users via the Situations gadget. The service supports two operations.

The service uses basic authentication, with a default username `admin` and password `overlord`.

7.4.1. Ignoring situations related to a subject

The `ignore` operation is used to indicate that situations for a particular subject (i.e. generally a service type) should not be presented to users via the REST service (and therefore the Situations gadget).

The URL for the `ignore` operation's POST request is: `<host>/overlord-rtgov/situation/manager/ignore`

This request supplies a JSON representation of the `org.overlord.rtgov.analytics.situation.IgnoreSubject` class. See the API documentation for more information.

The operation responds with a status message indicating whether the operation was successful.



Note

Currently wildcards are not supported for subjects.

7.4.2. Observing situations related to a subject

The `observe` operation is used to essentially reverse the actions performed by a previous `ignore` operation, to make situations for a particular subject (i.e. generally a service type) visible again to users via the REST service (and therefore the Situations gadget).

The URL for the `observe` operation's POST request is: `<host>/overlord-rtgov/situation/manager/observe`

This request supplies a JSON representation of the `org.overlord.rtgov.analytics.situation.IgnoreSubject` class. See the API documentation for more information.

The operation responds with a status message indicating whether the operation was successful.

Chapter 8. Managing The Infrastructure

8.1. Managing the Activity Collector

The Activity Collector mechanism is responsible for collecting activity event information from within a particular execution environment and reporting it as efficiently as possible to the Activity Server.

This section explains how different Activity Collector implementations may be administered.

8.1.1. Activity Collector

Object Name: overlord.rtgov.collector:name=ActivityCollector

The activity collector has the following configuration properties:

Property	Description
CollectionEnabled	A boolean property that can be used to enable or disable activity collection within the server.

8.1.2. Activity Logger

Object Name: overlord.rtgov.collector:name=ActivityLogger

This component uses a batching capability to enable the information to be sent to the Activity Server as efficiently as possible. This mechanism has the following configuration properties:

Property	Description
MaxUnitCount	The maximum number of activity units that should be batched before sending the group to the Activity Server.
MaxTimeInterval	The maximum amount of time (in milliseconds) before sending the batch of events to the server.

The maximum number of items takes precedence, so if it is reached before the defined interval, then the events will be sent to the server.

If the collector is running within a JEE environment, then these properties can be set via a JMX, e.g. using the JConsole:

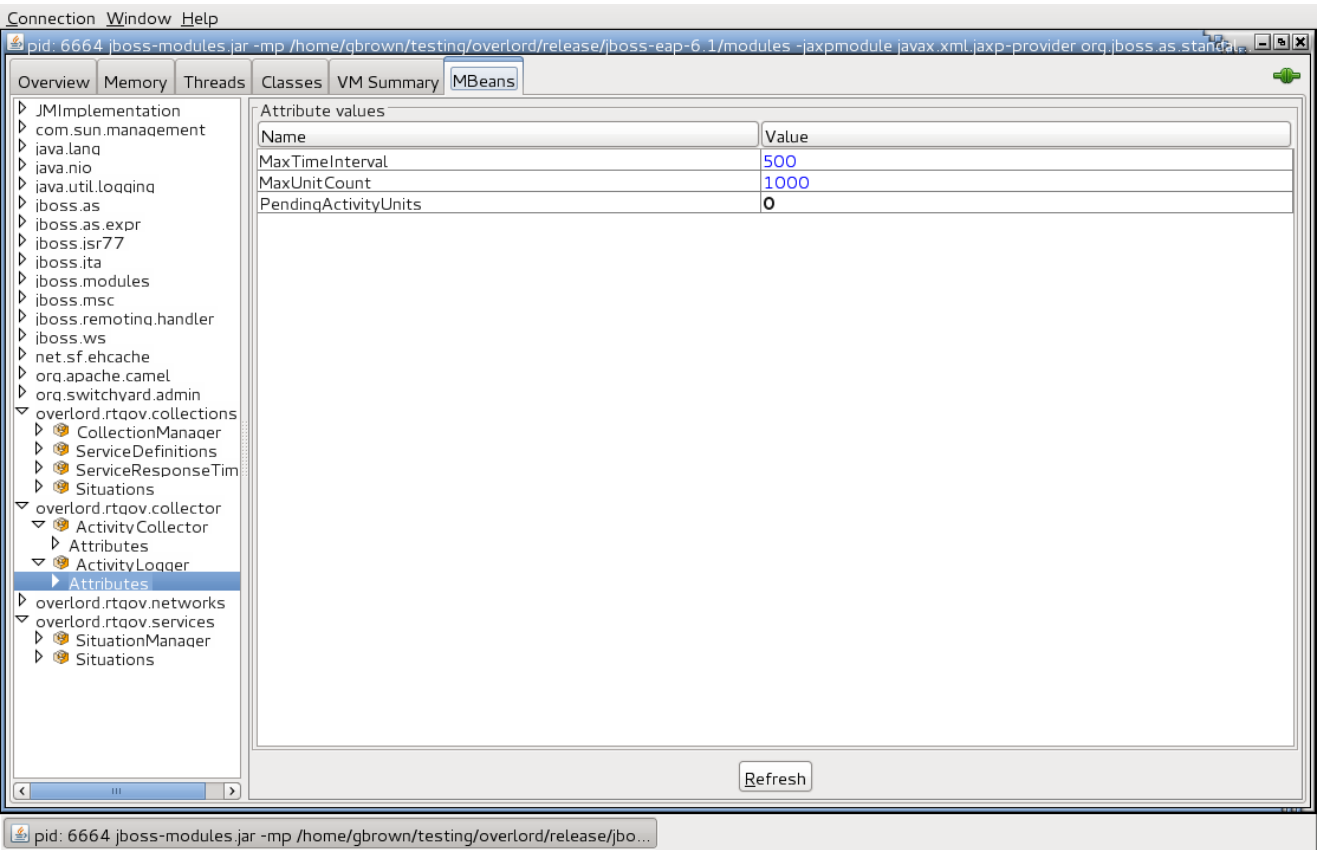


Figure 8.1.

The component also provides a *read-only* property:

Property	Description
PendingActivityUnits	This value indicates how many logger messages are waiting to be sent to the server. This can be used to guage how busy the collector is, and whether it is getting backed up.

8.2. Managing the Event Processor Networks

There are two aspects to managing the Event Processor Network mechanism, the *manager* component and the networks themselves. This section will outline the management capabilities associated with both.

8.2.1. Event Processor Network Manager

Object Name: overlord.rtgov.networks:name=EPNManager

The Event Processor Network Manager is the component responsible for registering and initializing the Event Processor Networks within a containing environment.

If supported, the manager's attributes and notifications can be exposed via JMX. Currently the attributes that are available:

Attribute	Description
NumberOfNetworks	This attribute defines the number of networks registered in the manager.

8.2.2. Event Processor Networks

Object Name: overlord.rtgov.networks:name=<name>,version=<version>

When a network is registered, if within a JEE environment, it will also be registered as a managed bean, and therefore available via JMX. Each network provides the following attributes:

Attribute	Description
LastAccessed	When the network was last used to process an event. This can be used to determine when it is safe to remove/unregister a network.
Name	The name of the network.
Version	The version of the network.

For example, using the JConsole:

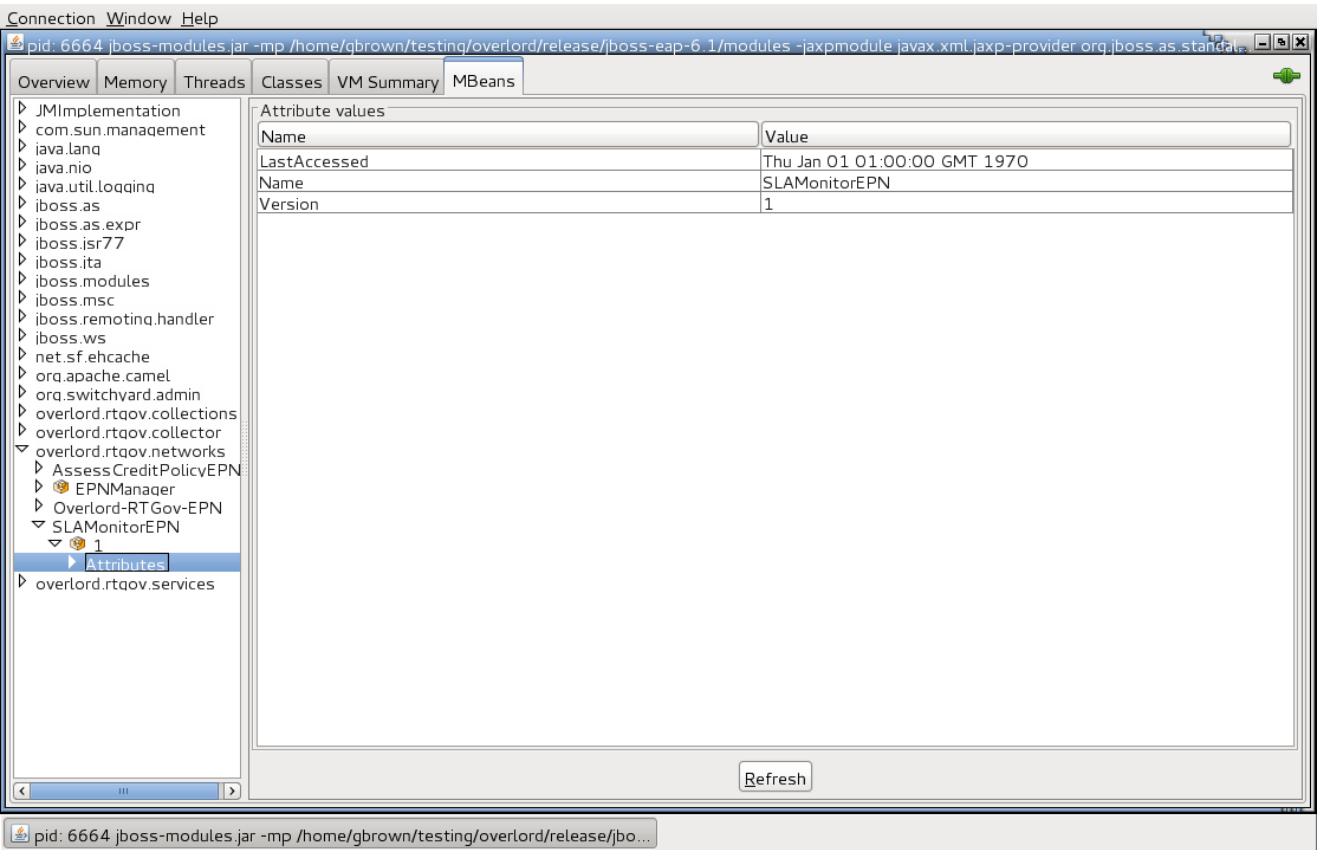


Figure 8.2.

8.3. Managing the Active Collections

There are two aspects to managing the Active Collections mechanism, the *manager* component and the collections themselves. This section will outline the management capabilities associated with both.

8.3.1. Active Collection Manager

Object Name: overlord.rtgov.collections:name=CollectionManager

The Active Collection Manager is the component responsible for registering and initializing the Active Collection Sources within a containing environment.

If supported, the manager's attributes and notifications can be exposed via JMX. Currently the attributes that are available:

Attribute	Description
HouseKeepingInterval	The number of milliseconds between each house keeping cycle. The house keeping refers to removing items from collections if they are either expired, or the maximum

Attribute	Description
	number of elements in the collection has been reached.

8.3.2. Active Collections

Object Name: `overlord.rtgov.collections:name=<ActiveCollectionSourceName>`

When a source is registered resulting in an Active Collection being created, if within a JEE environment, the Active Collection will also be registered as a managed bean, and therefore available via JMX. Each collection provides the following attributes:

Attribute	Description
HighWaterMark	If the number of items in the collection reaches this value, then a warning will be issued. If zero, then does not apply.
ItemExpiration	The number of milliseconds before an item in the collection should be removed. If zero, then does not apply.
MaxItems	The maximum number of items that should be in the collection. If zero, then does not apply.
Name	The name of the Active Collection.
Size	The number of items in the collection.

For example, using the JConsole:

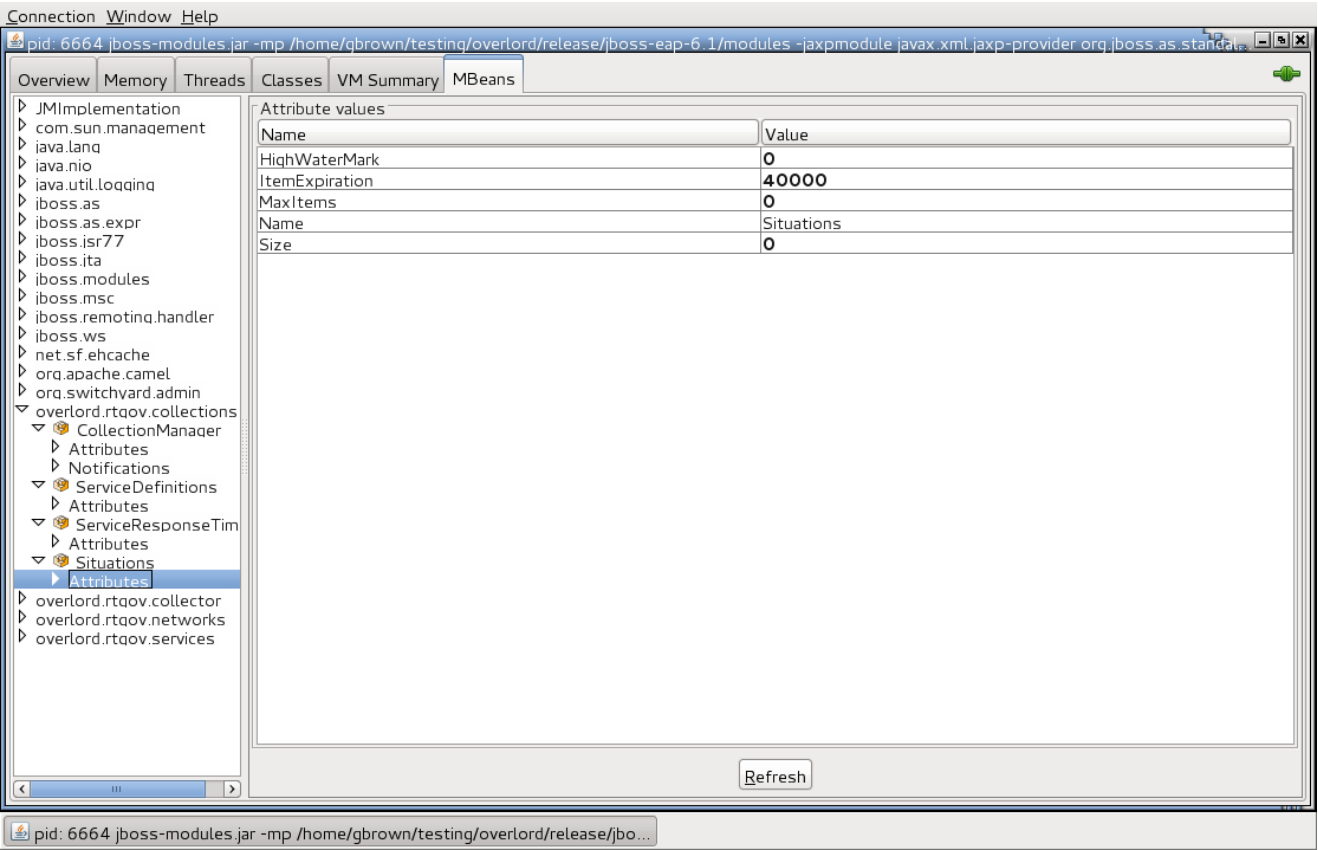


Figure 8.3.